

The background of the cover is an abstract monotype artwork. It features several vertical, dripping shapes of paint in vibrant colors: blue, green, red, and pink. These shapes are set against a background of fine, repeating patterns that resemble stylized leaves or ferns. The overall effect is a rich, textured composition with a sense of organic growth and fluidity.

Markus Linnenbrink

Monotypes

Center Street Studio



Center Street Studio is the exclusive print publisher of Markus Linnenbrink. During their 15-year partnership, Linnenbrink and master printer James Stroud have produced a number of monotype projects informed by the artist's epoxy resin paintings and large-scale installations. His work, both paintings and prints, are included in a number of institutional and private collections throughout Europe, Asia, and the United States.

You can also find available prints from Markus Linnenbrink and other CSS artists through the follow links.

(click thumbnails to link to page URL)

(click images throughout catalogue to link to Printed Editions)

**printed
editions**
ART FOR COLLECTORS AND DEALERS

center
street
studio

email: jstroud@centerstreetstudio.com

© Markus Linnenbrink and Center Street Studio, 2015

design: Ryder Stroud

Directory

(click on any of the thumbnails to jump to the project's catalogue page)

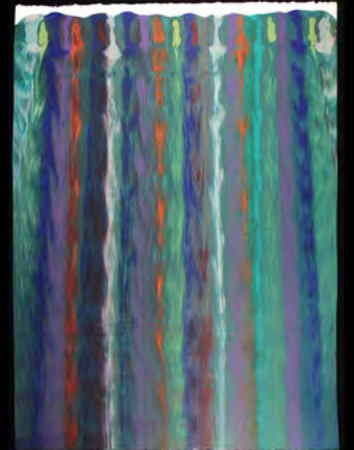
IHEARDYOULOOKING(SCHRÄG)

2015



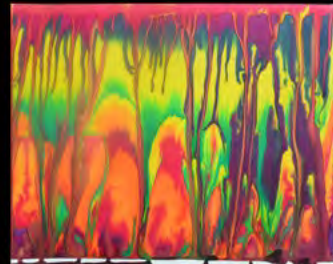
MUDHONEY(NOV15)

2015



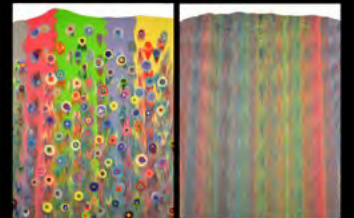
EVENTHOUGHYOUHAVETOGO

2015



IHEARDYOULOOKING

2013



VALLEYOFTHEDOLLS

2009



METHINKSYOURIGHTNOPROBLEM

2004

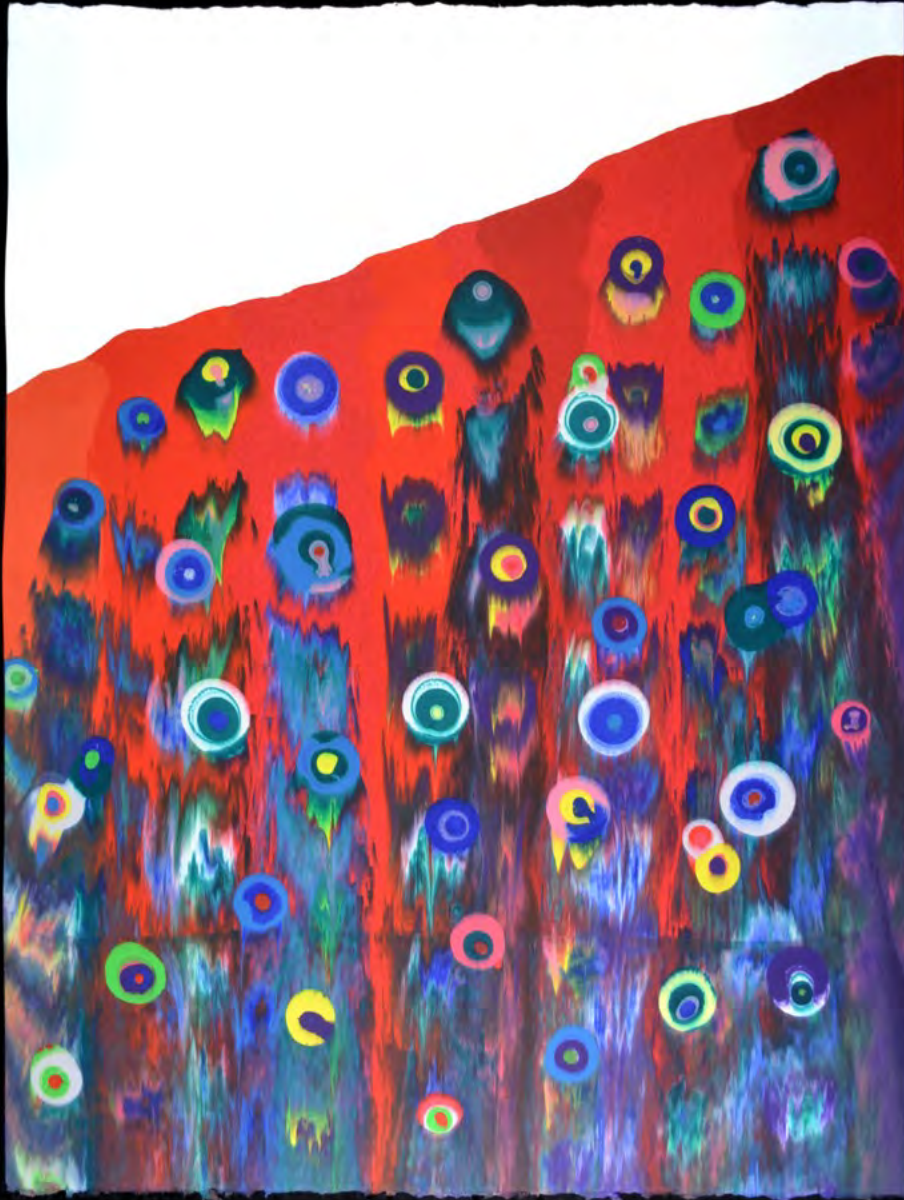


I HEARD YOU LOOKING (SCHRÄG)

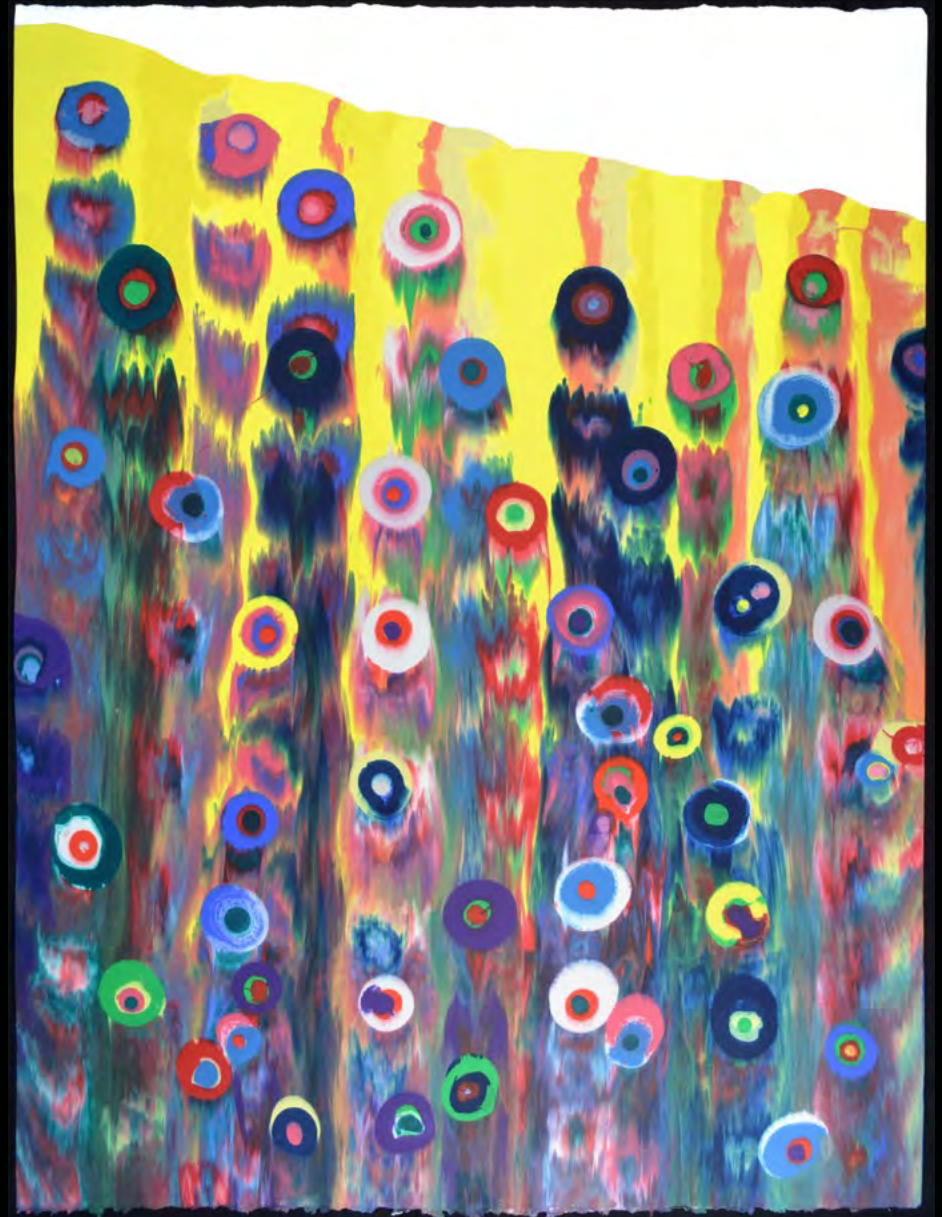
2015



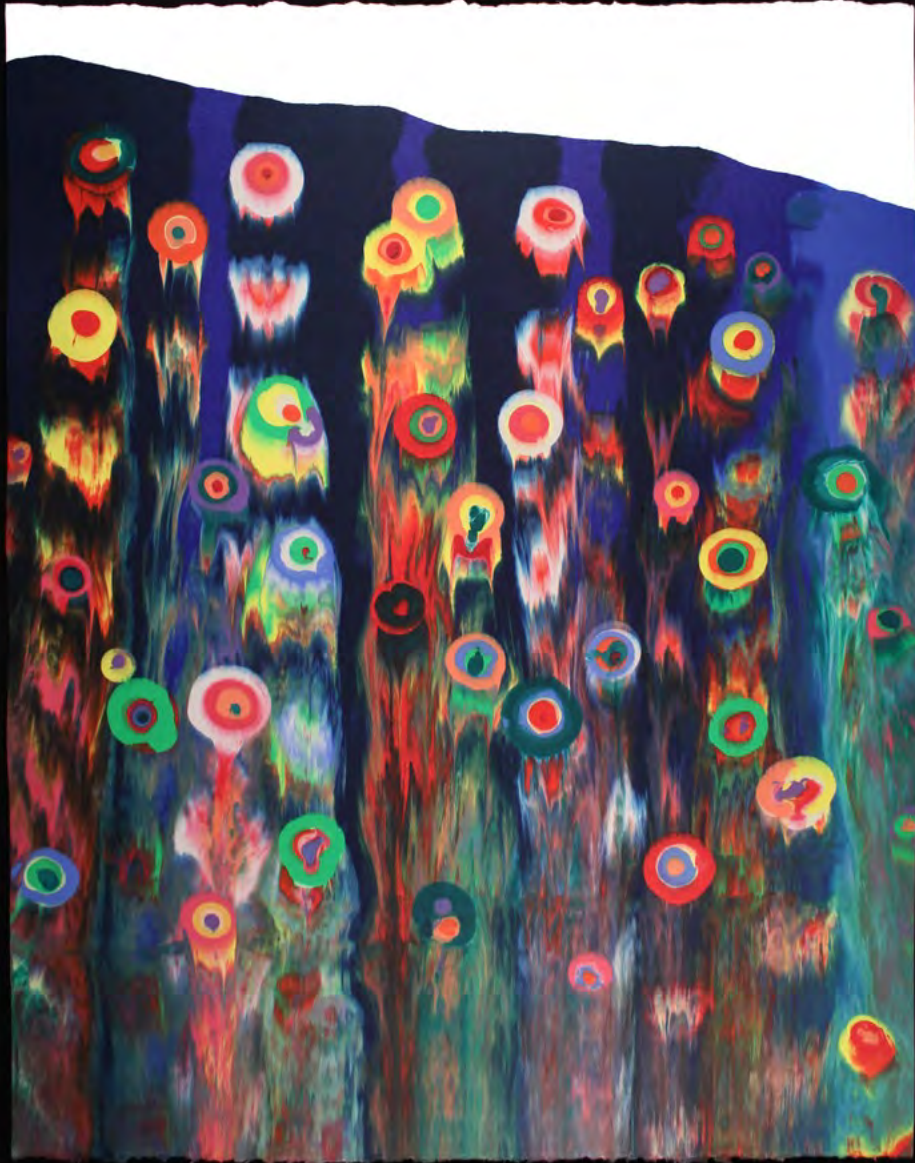
[Back to directory](#)



I HEARD YOU LOOKING (SCHRÄG) 1
monotype
52 x 39.5 inches (image/sheet)
2015



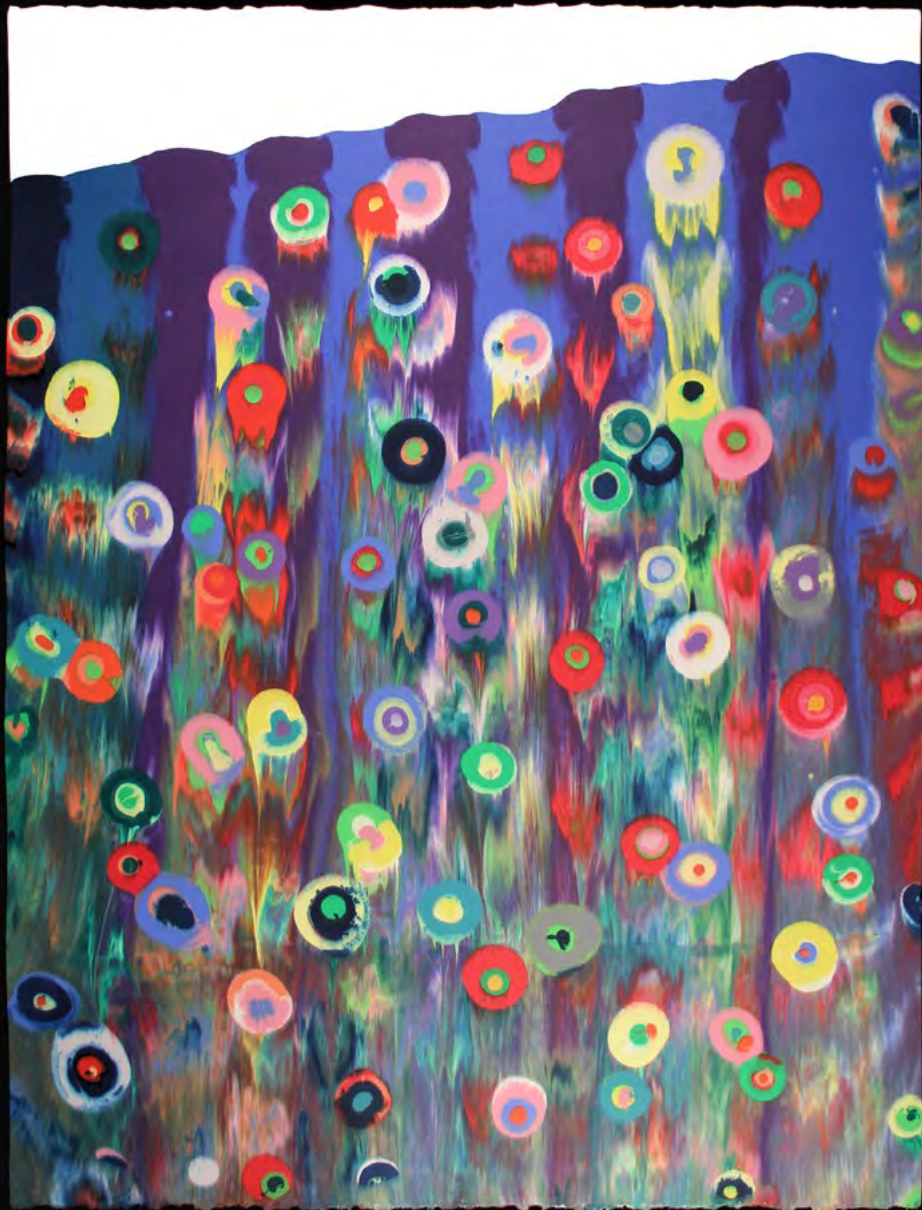
I HEARD YOU LOOKING (SCHRÄG) 2
monotype
52 x 39.5 inches (image/sheet)
2015



I HEARD YOU LOOKING (SCHRÄG) 3
monotype
52 x 39.5 inches (image/sheet)
2015



I HEARD YOU LOOKING (SCHRÄG) 4
monotype
52 x 39.5 inches (image/sheet)
2015



I HEARD YOU LOOKING (SCHRÄG) 5
monotype
52 x 39.5 inches (image/sheet)
2015



I HEARD YOU LOOKING (SCHRÄG) 6
monotype
52 x 39.5 inches (image/sheet)
2015



I HEARD YOU LOOKING(SCHRÄG) 7
monotype
52 x 34.5 inches (image/sheet)
2015



I HEARD YOU LOOKING(SCHRÄG) 8
monotype
52 x 34.5 inches (image/sheet)
2015



MUDHONEY(NOV15)

2015

[Back to directory](#)



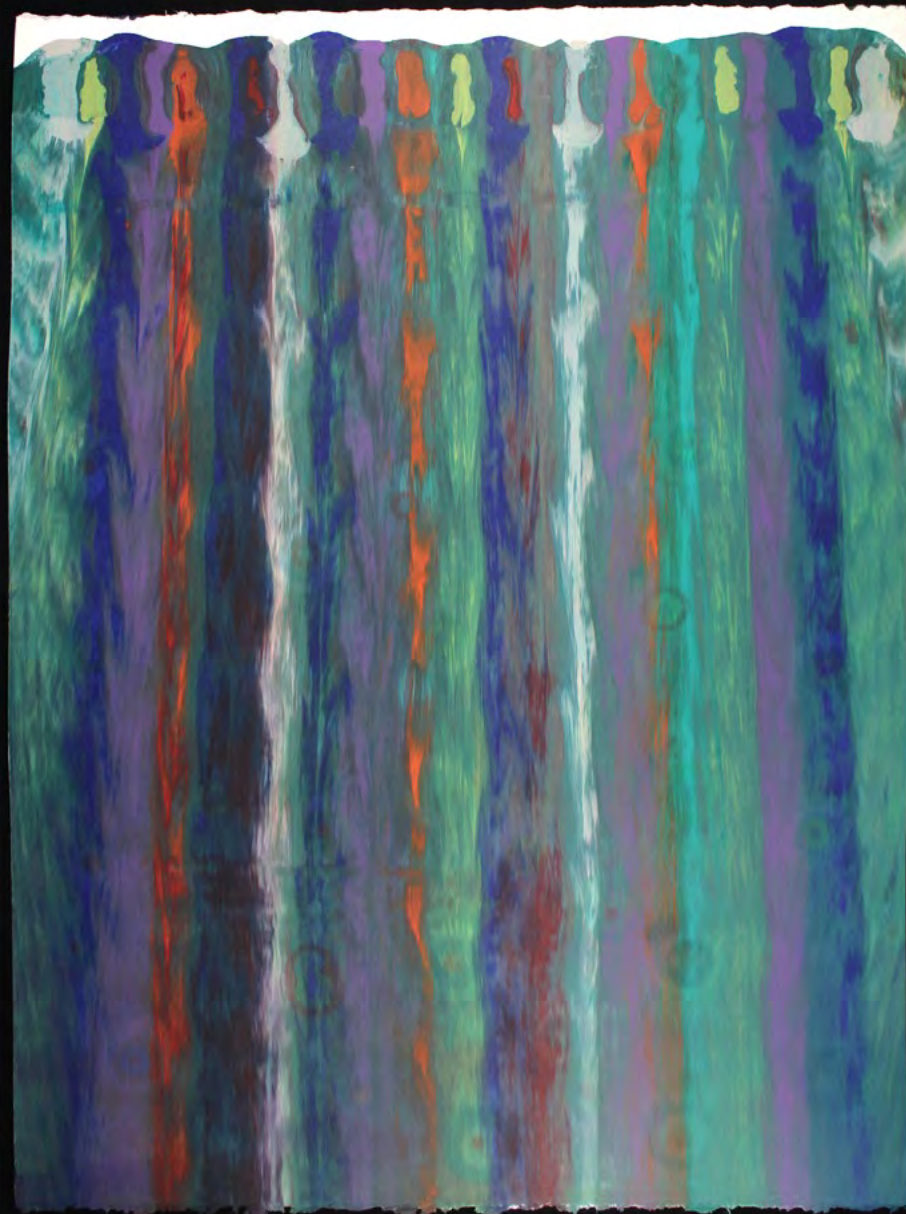
MUDHONEY(NOV15) 1
monotype
52 x 39.5 inches (image/sheet)
2015



MUDHONEY(NOV15) 2
monotype
52 x 39.5 inches (image/sheet)
2015



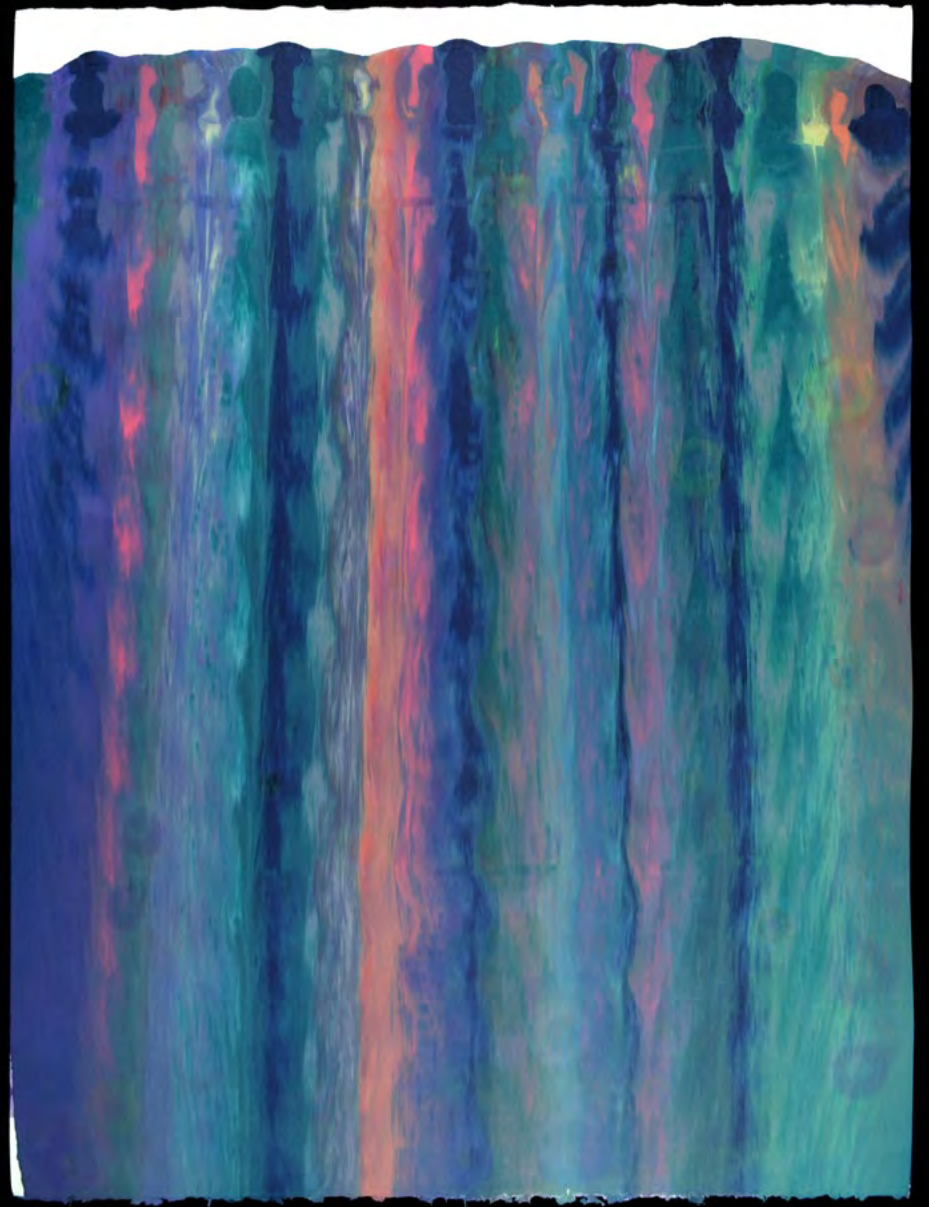
MUDHONEY(NOV15) 3
monotype
52 x 39.5 inches (image/sheet)
2015



MUDHONEY(NOV15) 4
monotype
52 x 39.5 inches (image/sheet)
2015



MUDHONEY(NOV15) 5
monotype
52 x 39.5 inches (image/sheet)
2015



MUDHONEY(NOV15) 6
monotype
52 x 39.5 inches (image/sheet)
2015



MUDHONEY(NOV15) 7
monotype
52 x 34.5 inches (image/sheet)
2015

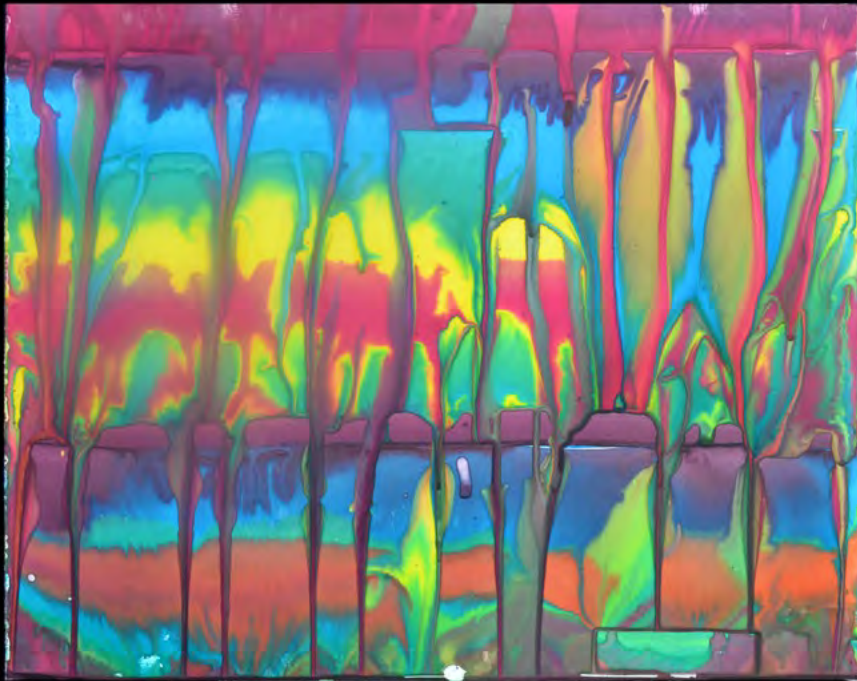




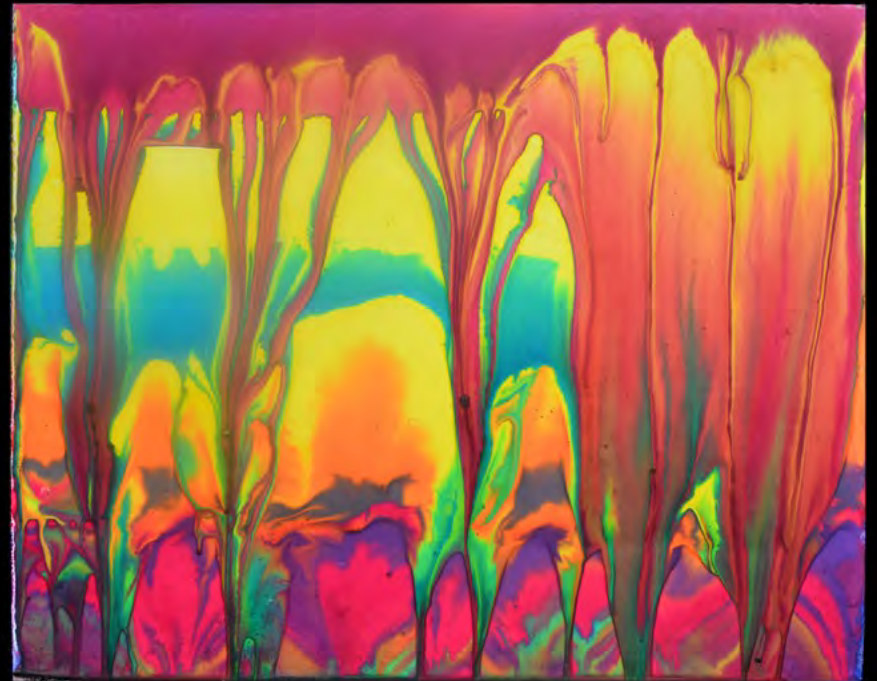
EVENTHOUGHYOUHAVETOGO

2015

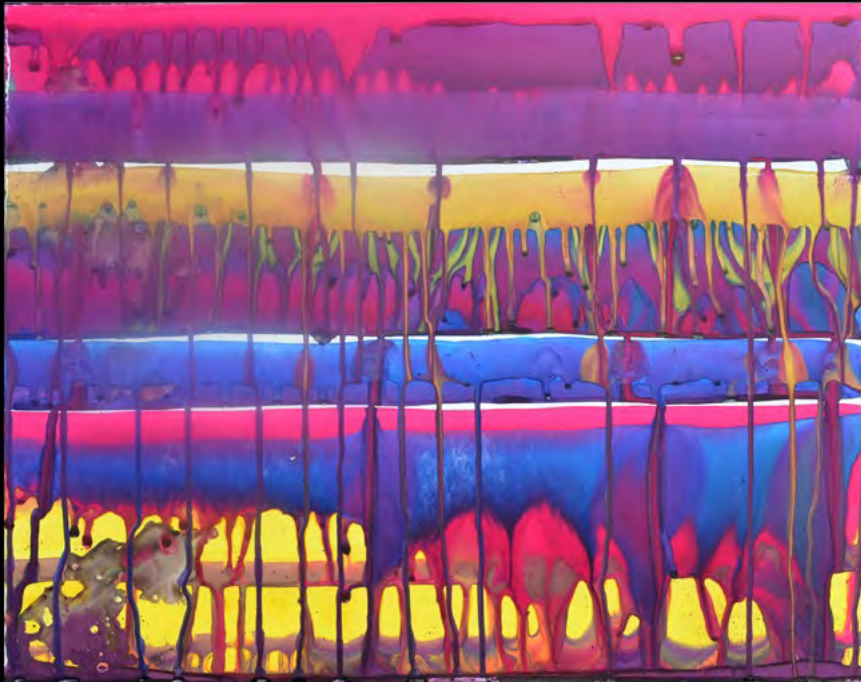
[Back to directory](#)



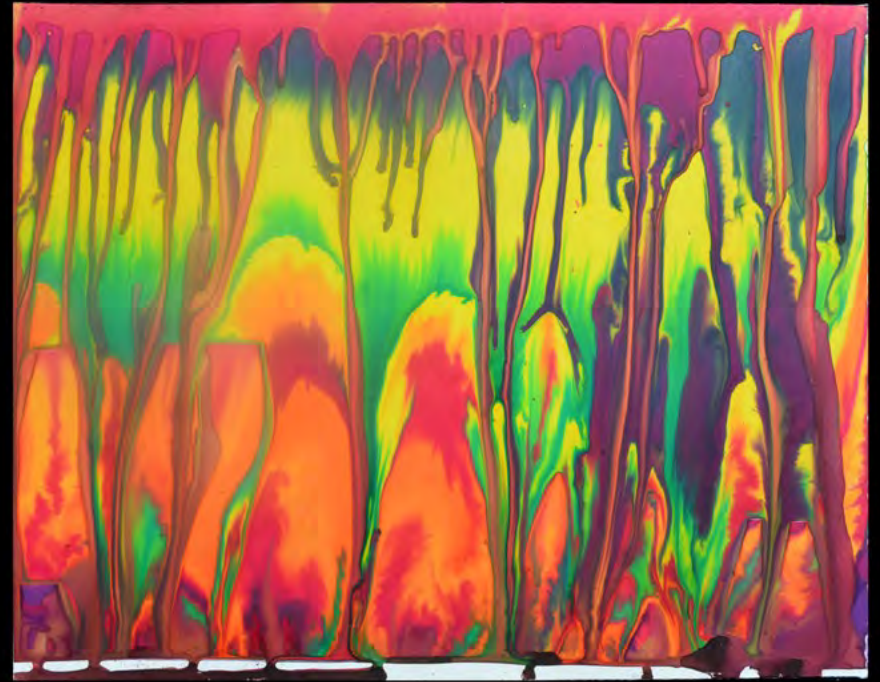
EVENTHOUGHYOUHAVETOGO 1
watercolor monotype
18 x 24 inches (image/sheet)
2015



EVENTHOUGHYOUHAVETOGO 2
watercolor monotype
18 x 24 inches (image/sheet)
2015



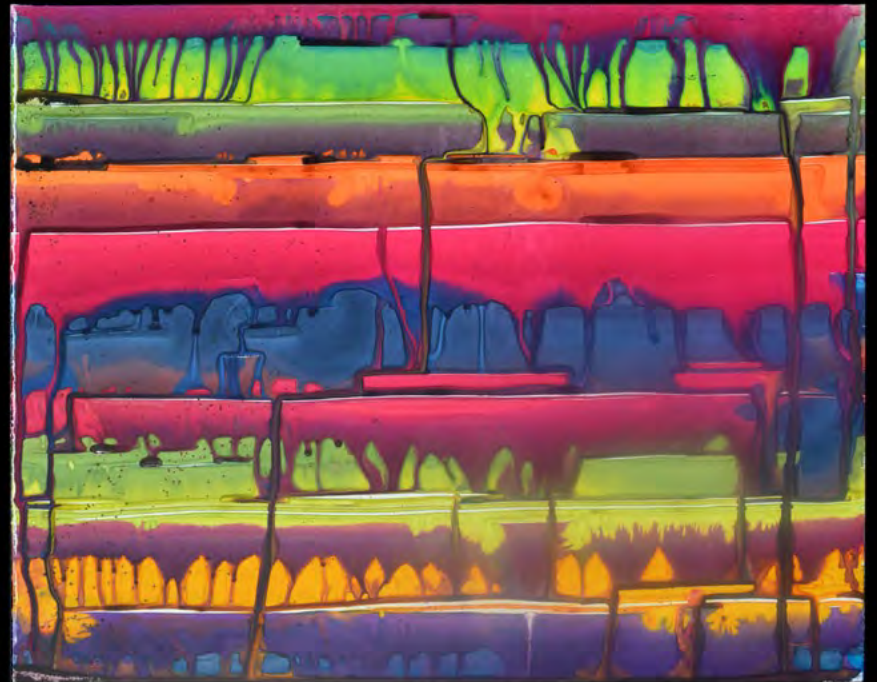
EVENTHOUGHYOUHAVETOGO 3
watercolor monotype
18 x 24 inches (image/sheet)
2015



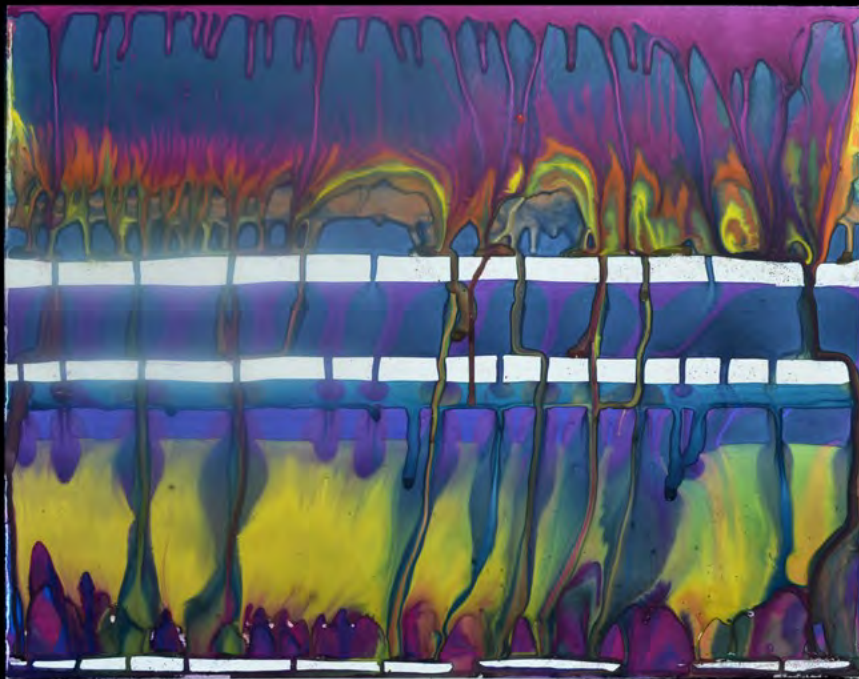
EVENTHOUGHYOUHAVETOGO 4
watercolor monotype
18 x 24 inches (image/sheet)
2015



EVENTHOUGHYOUHAVETOGO 5
watercolor monotype
18 x 24 inches (image/sheet)
2015



EVENTHOUGHYOUHAVETOGO 6
watercolor monotype
18 x 24 inches (image/sheet)
2015



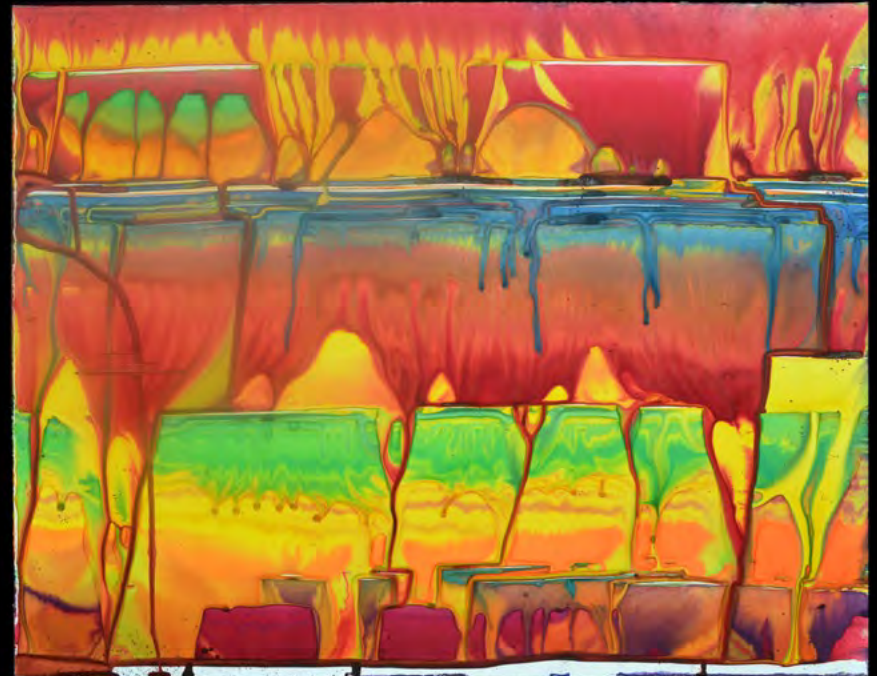
EVENTHOUGHYOUHAVETOGO 7
watercolor monotype
18 x 24 inches (image/sheet)
2015



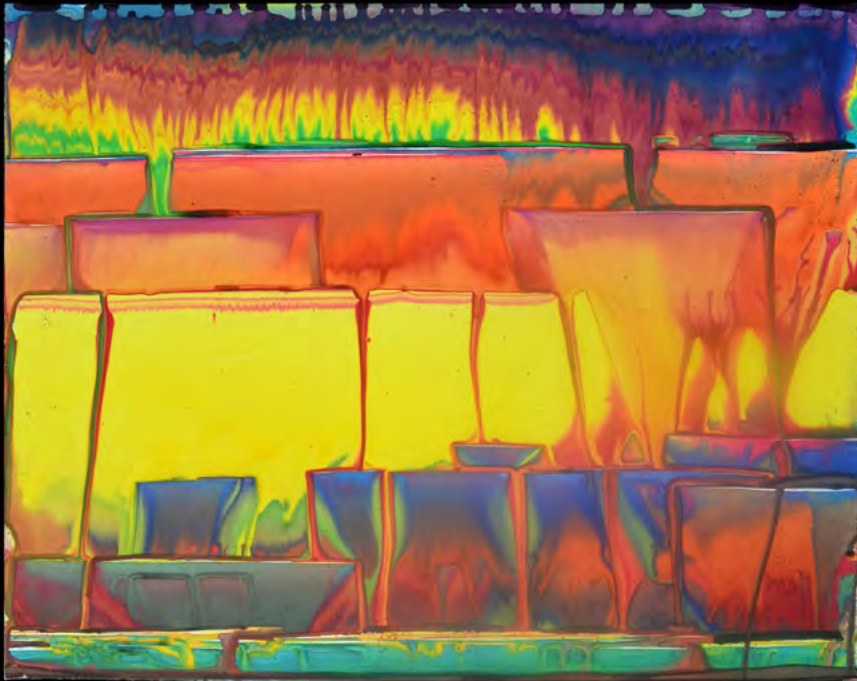
EVENTHOUGHYOUHAVETOGO 8
watercolor monotype
18 x 24 inches (image/sheet)
2015



EVENTHOUGHYOUHAVETOGO 9
watercolor monotype
18 x 24 inches (image/sheet)
2015



EVENTHOUGHYOUHAVETOGO 11
watercolor monotype
18 x 24 inches (image/sheet)
2015



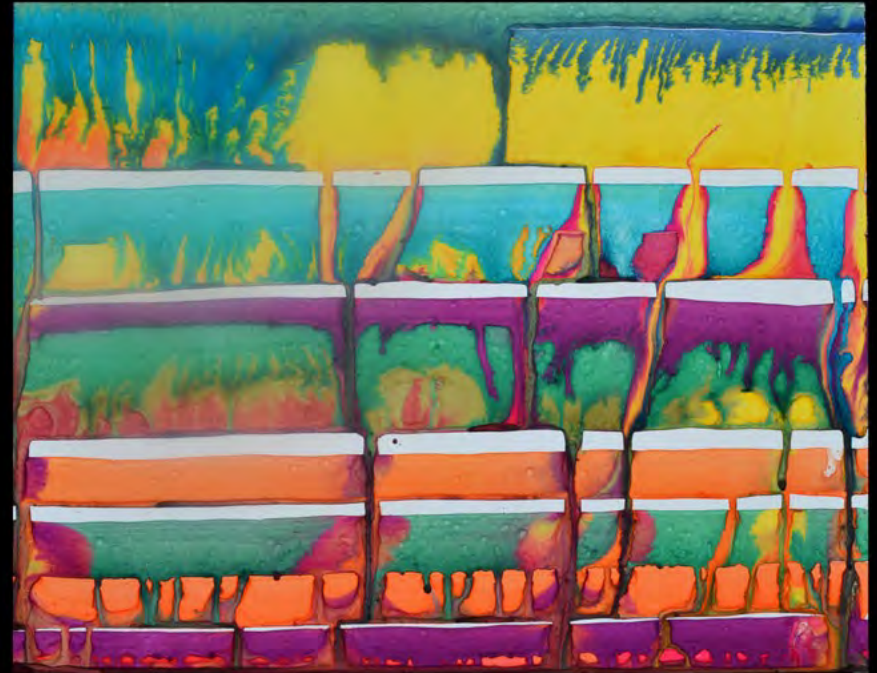
EVENTHOUGHYOUHAVETOGO 12
watercolor monotype
18 x 24 inches (image/sheet)
2015



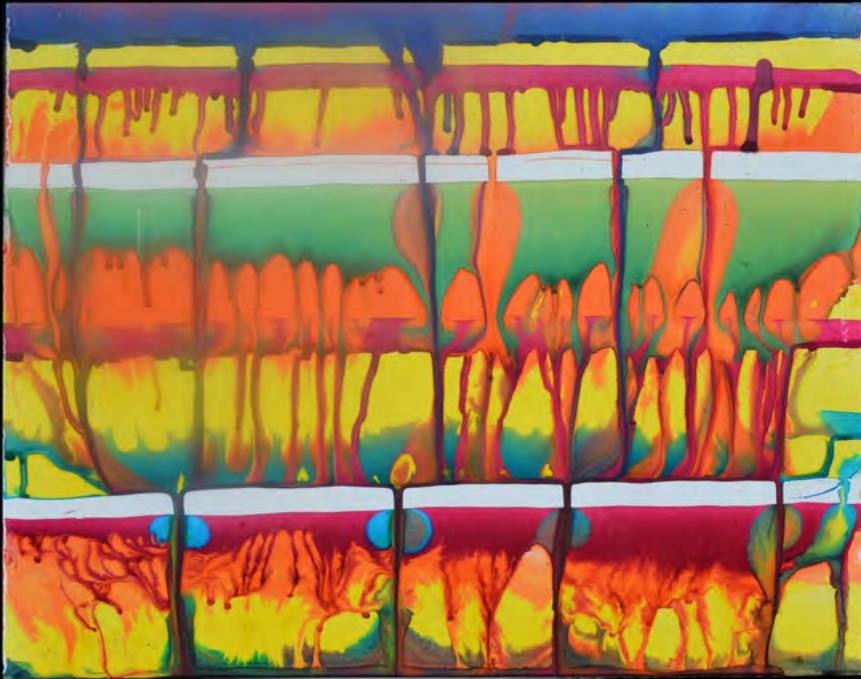
EVENTHOUGHYOUHAVETOGO 14
watercolor monotype
18 x 24 inches (image/sheet)
2015



EVENTHOUGHYOUHAVETOGO 15
watercolor monotype
18 x 24 inches (image/sheet)
2015



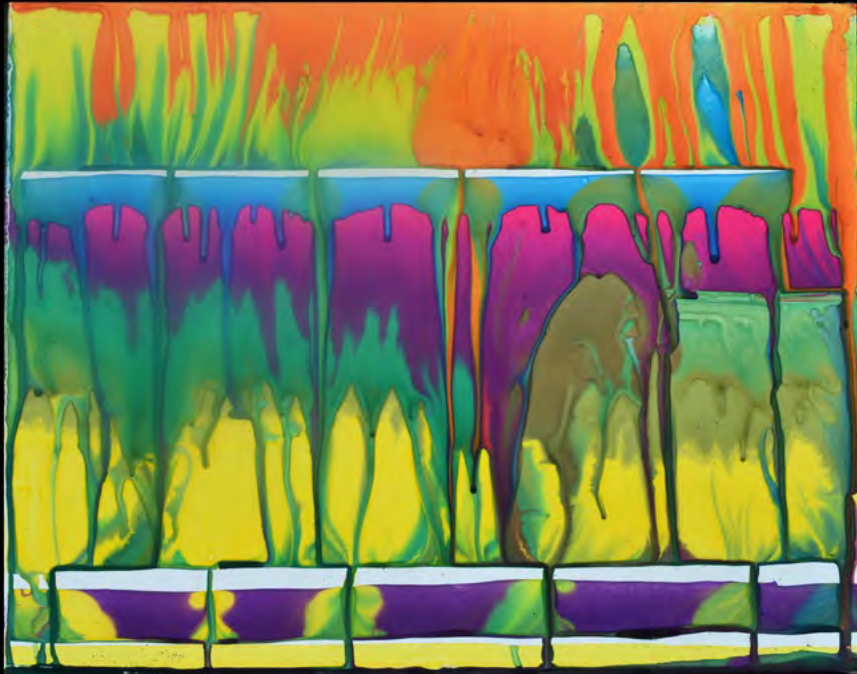
EVENTHOUGHYOUHAVETOGO 16
watercolor monotype
18 x 24 inches (image/sheet)
2015



EVENTHOUGHYOUHAVETOGO 17
watercolor monotype
18 x 24 inches (image/sheet)
2015



EVENTHOUGHYOUHAVETOGO 18
watercolor monotype
18 x 24 inches (image/sheet)
2015



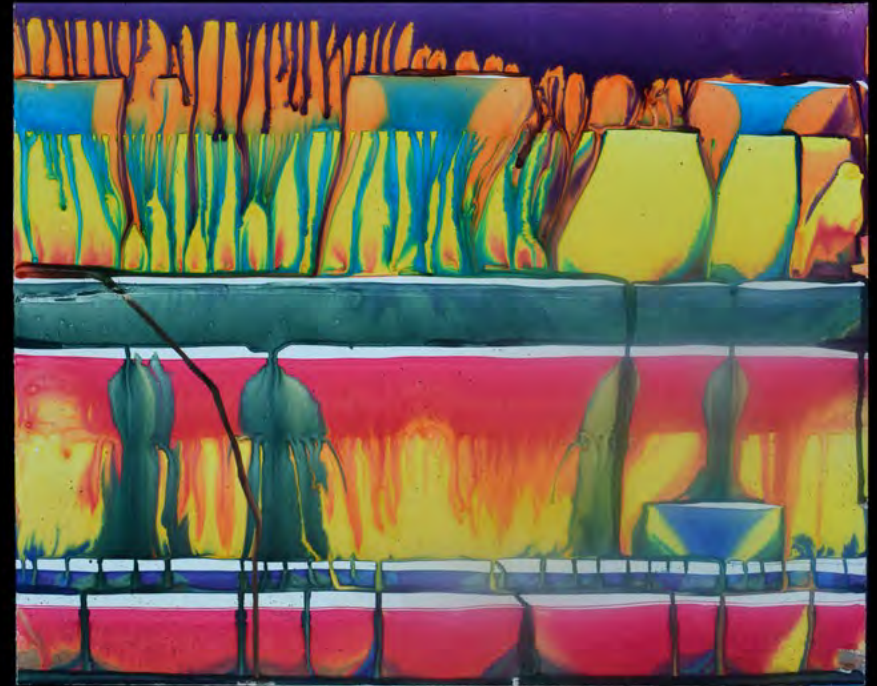
EVENTHOUGHYOUHAVETOGO 19
watercolor monotype
18 x 24 inches (image/sheet)
2015



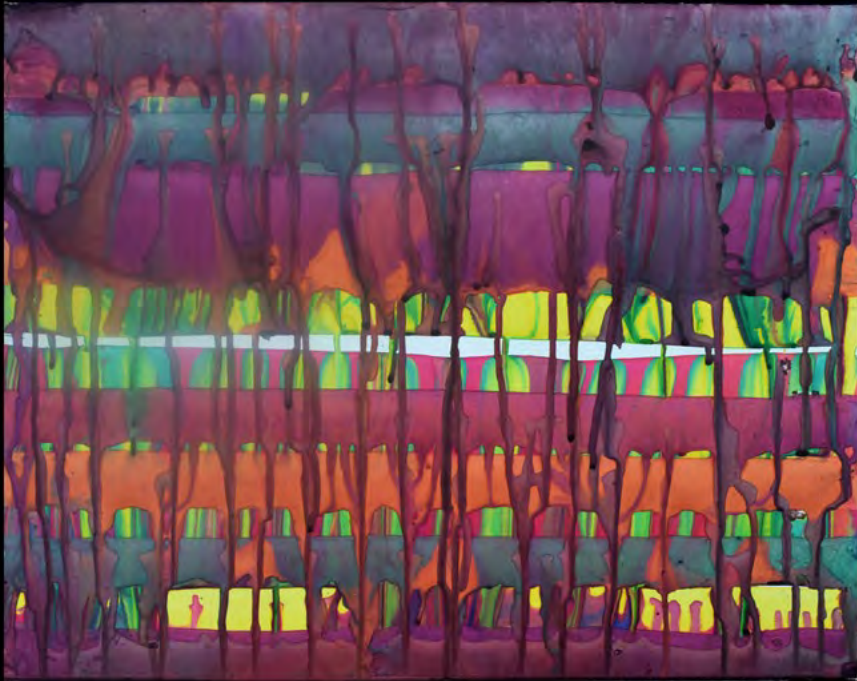
EVENTHOUGHYOUHAVETOGO 20
watercolor monotype
18 x 24 inches (image/sheet)
2015



EVENTHOUGHYOUHAVETOGO 22
watercolor monotype
18 x 24 inches (image/sheet)
2015



EVENTHOUGHYOUHAVETOGO 23
watercolor monotype
18 x 24 inches (image/sheet)
2015



EVENTHOUGHYOUHAVETOGO 24
watercolor monotype
18 x 24 inches (image/sheet)
2015



EVENTHOUGHYOUHAVETOGO 25
watercolor monotype
18 x 24 inches (image/sheet)
2015

The background is a vibrant, abstract composition. It features vertical, textured brushstrokes in shades of red, orange, purple, and green. Overlaid on these are numerous circular motifs, each with a unique, multi-layered pattern of colors and textures, resembling stained glass or intricate folk art designs. The overall effect is a rich, multi-colored collage.

I HEARD YOU LOOKING

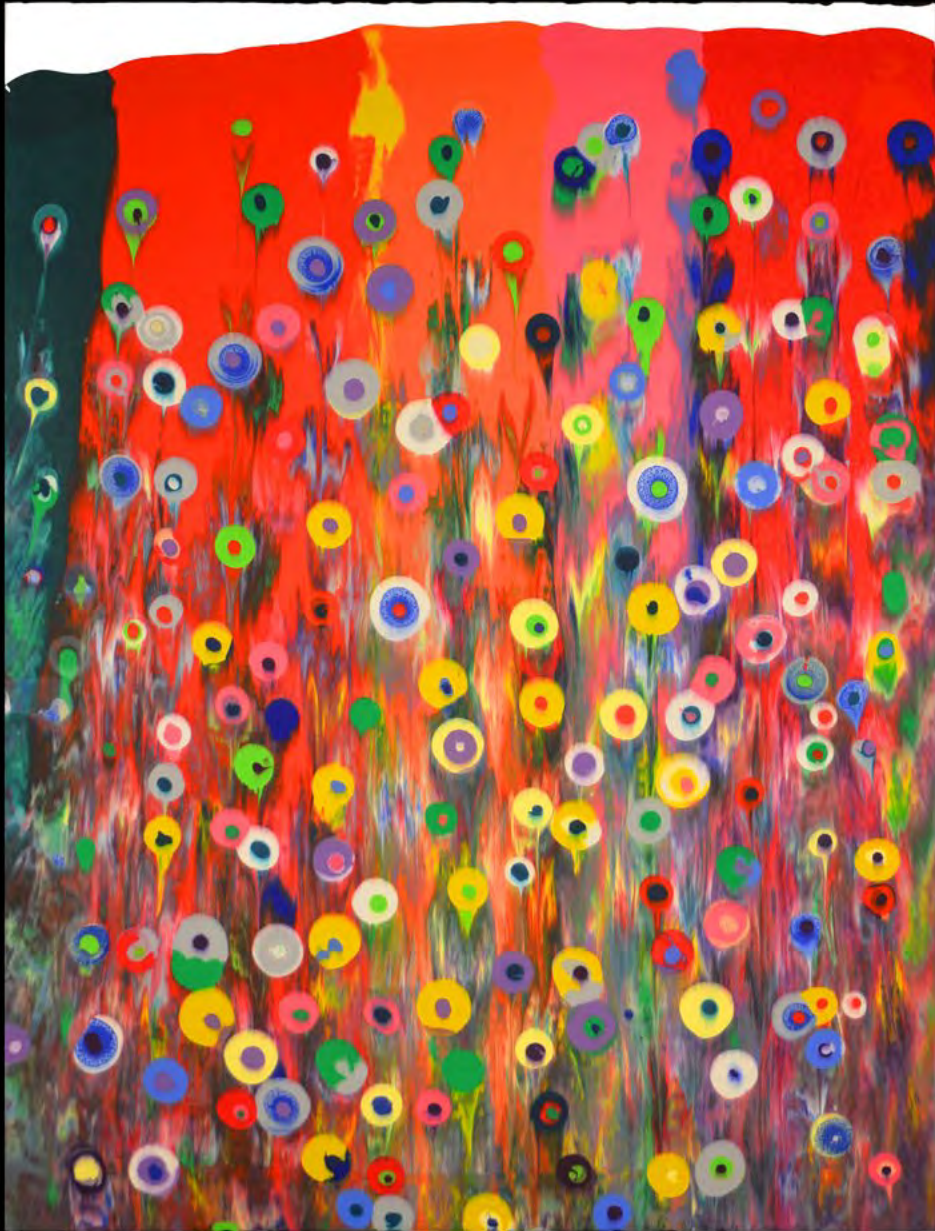
2013

[Back to directory](#)



I HEARD YOU LOOKING 18
monotype
52 x 79 inches (image/sheet)
2013





IHEARDYOULOOKING 19
monotype
52 x 79 inches (image/diptych sheet)
2013





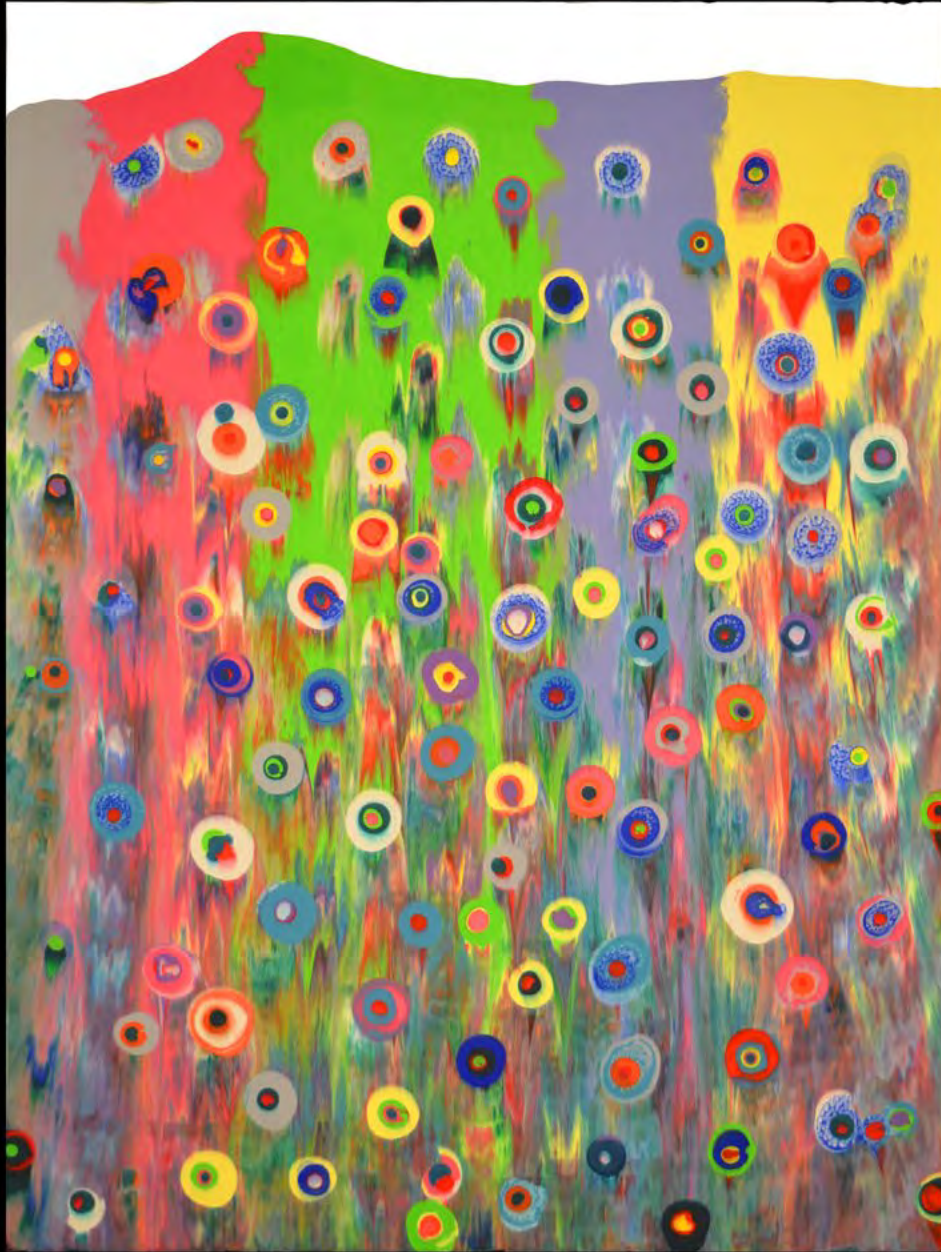
IHEARDYOULOOKING 22
monotype
52 x 79 inches (image/diptych sheets)
2013





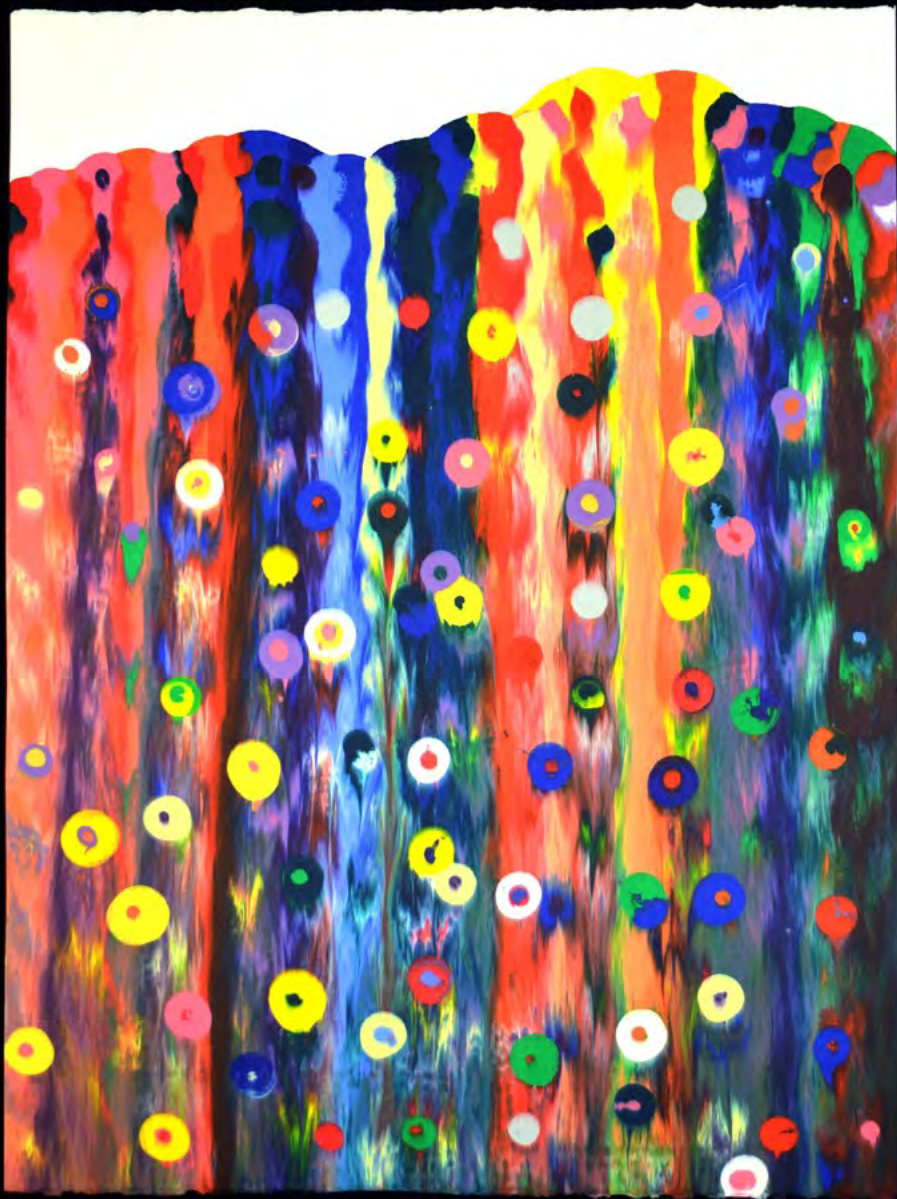
I HEARD YOU LOOKING 23
monotype
52 x 79 inches (image/sheet)
2013



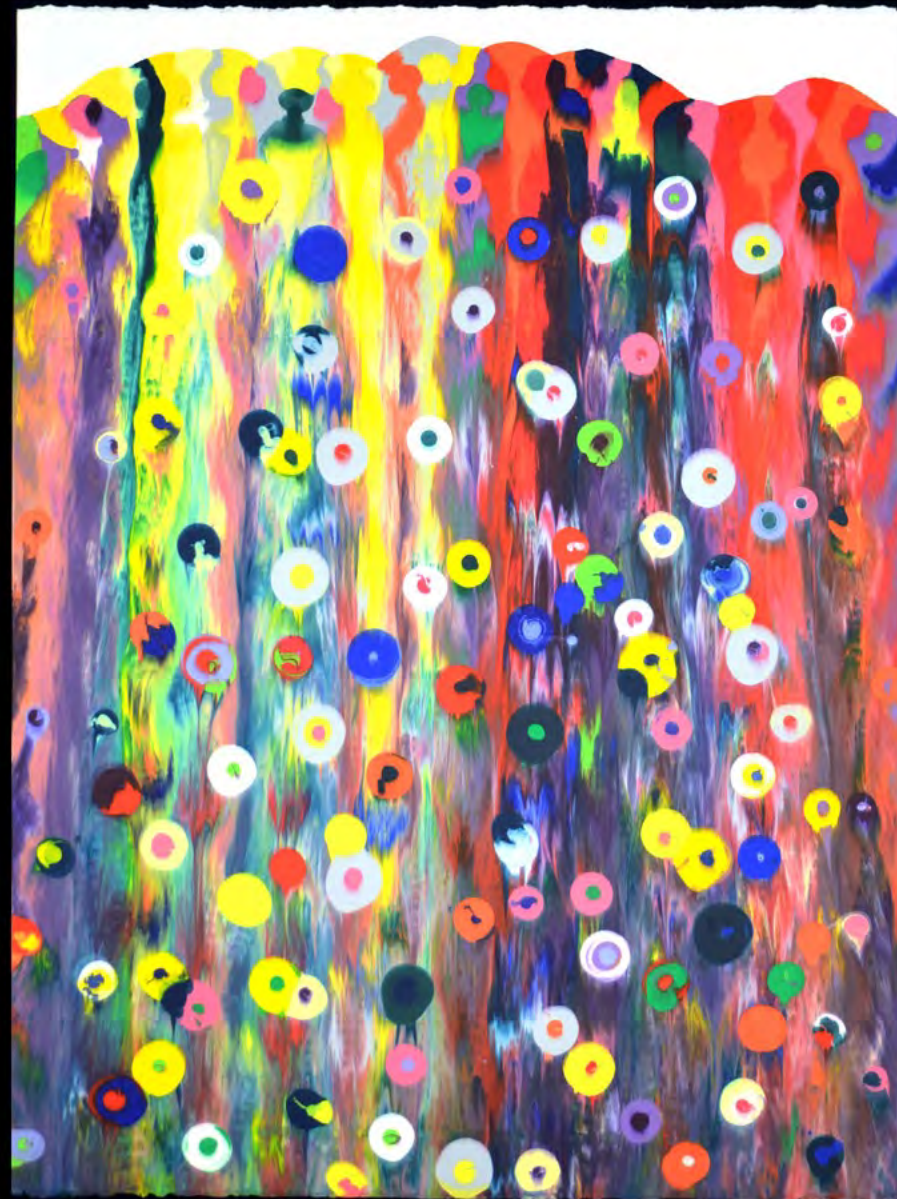


I HEARD YOU LOOKING 24
monotype
52 x 79 inches (image/sheet)
2013





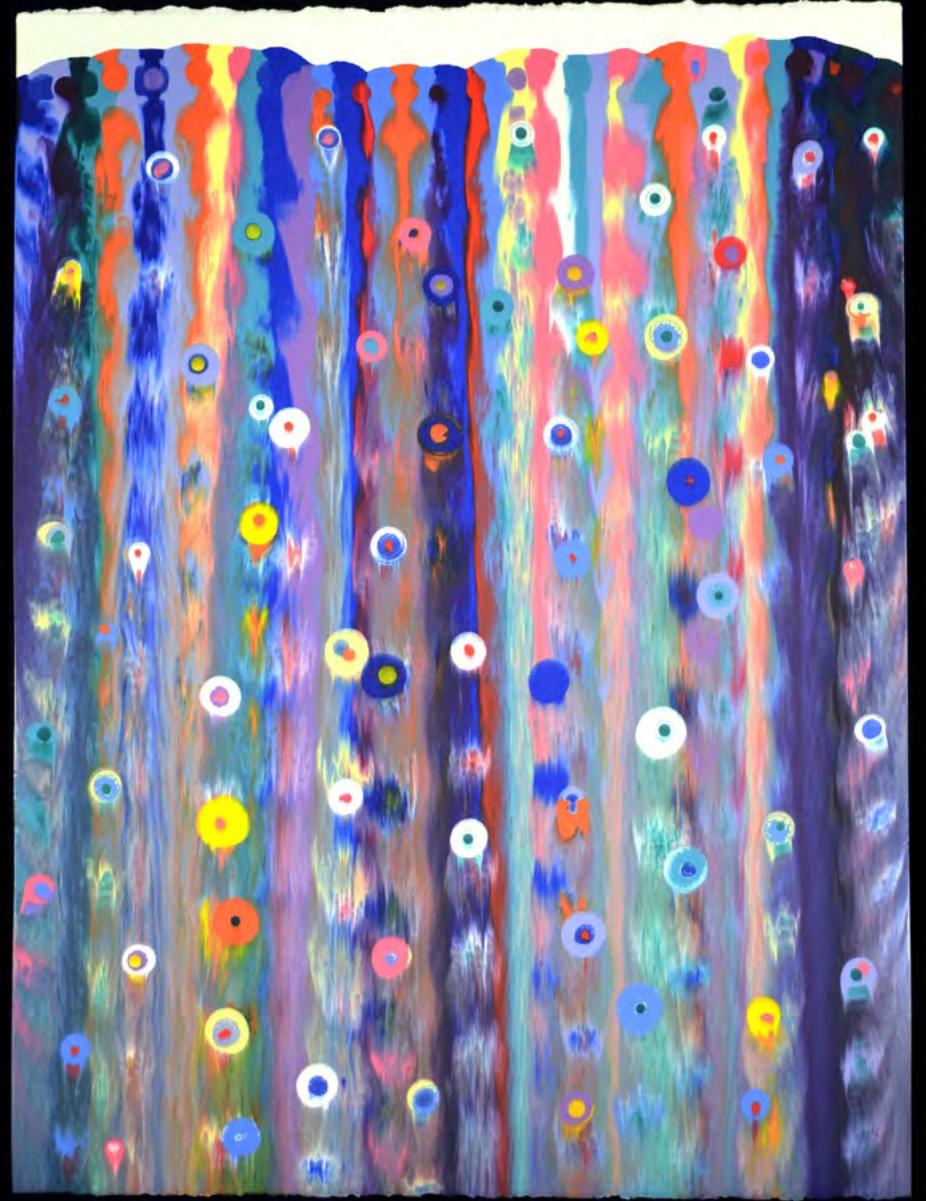
I HEARD YOU LOOKING 6
monotype
52 x 39.5 (image/sheet)
2013



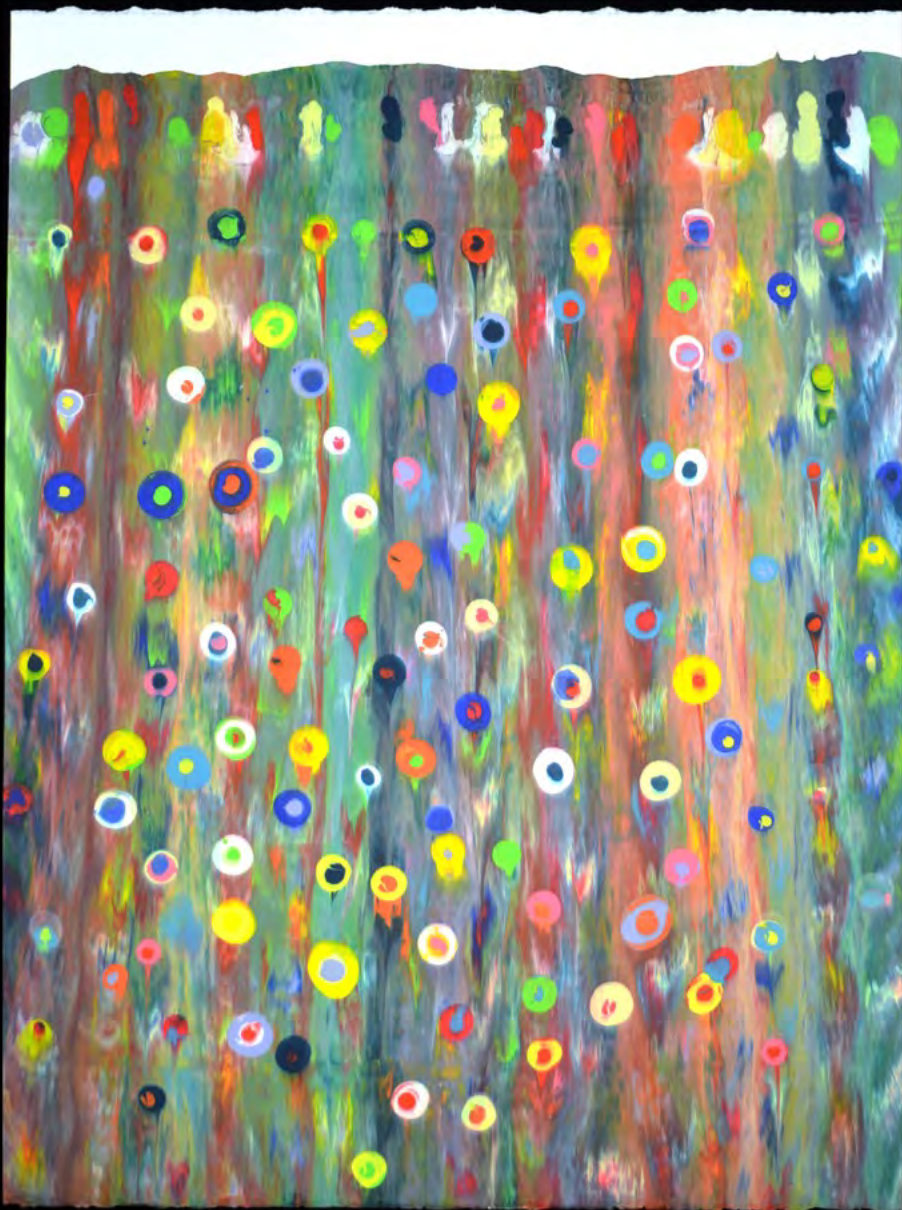
I HEARD YOU LOOKING 7
monotype
52 x 39.5 (image/sheet)
2013



I HEARD YOU LOOKING 8
monotype
52 x 39.5 (image/sheet)
2013



I HEARD YOU LOOKING 9
monotype
52 x 39.5 (image/sheet)
2013



I HEARD YOU LOOKING 11
monotype
52 x 39.5 (image/sheet)
2013



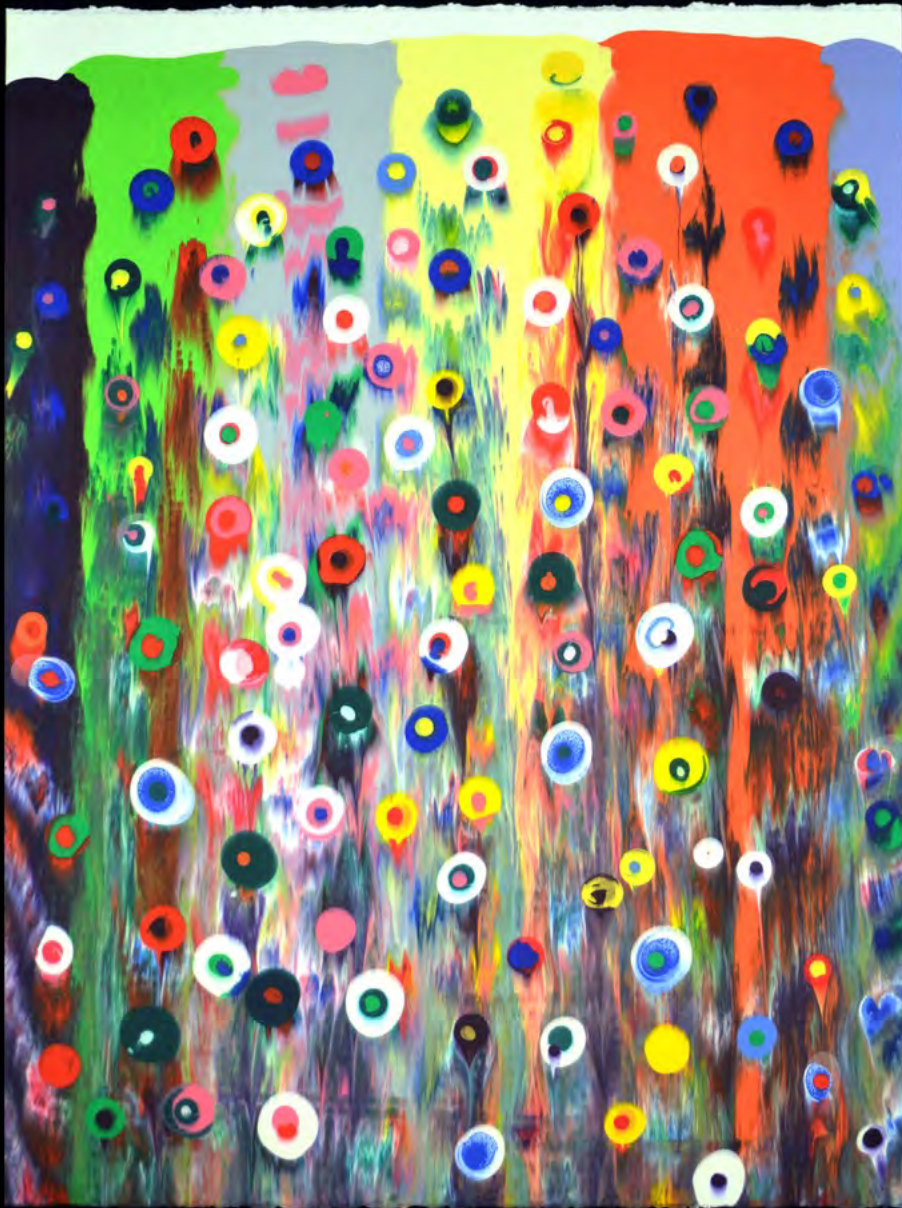
I HEARD YOU LOOKING 12
monotype
52 x 39.5 (image/sheet)
2013



I HEARD YOU LOOKING 13
monotype
52 x 39.5 (image/sheet)
2013



I HEARD YOU LOOKING 14
monotype
52 x 39.5 (image/sheet)
2013

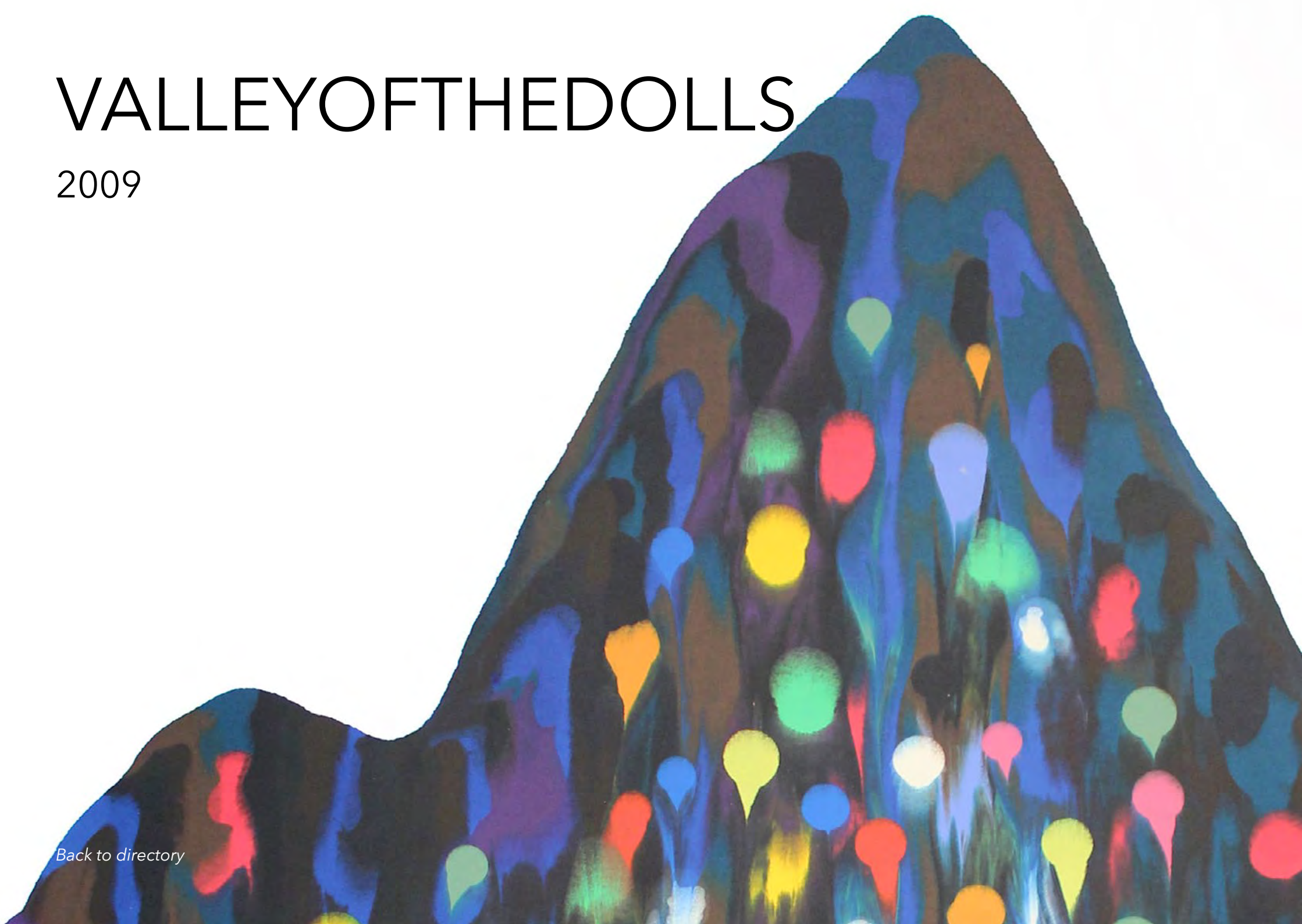


I HEARD YOU LOOKING 15
monotype
52 x 39.5 (image/sheet)
2013



VALLEY OF THE DOLLS

2009



[Back to directory](#)



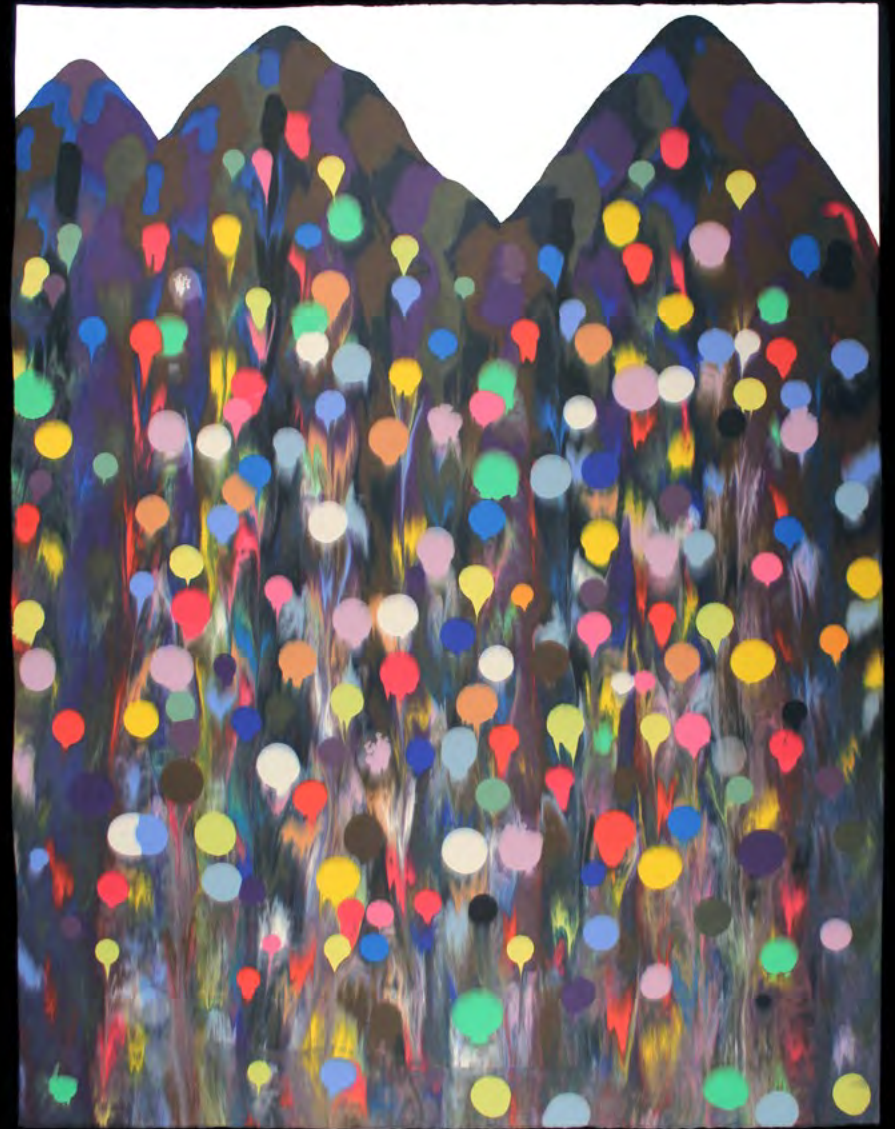
VALLEYOFTHEDOLLS 4
monotype
48 x 35.5 inches (image/sheet)
2009



VALLEYOFTHEDOLLS 7
monotype
48 x 35.5 inches (image/sheet)
2009



VALLEYOFTHE DOLLS 9
monotype
48 x 35.5 inches (image/sheet)
2009



VALLEYOFTHE DOLLS 10
monotype
48 x 35.5 inches (image/sheet)
2009



METHINKSYOURIGHTNOPROBLEM

2004

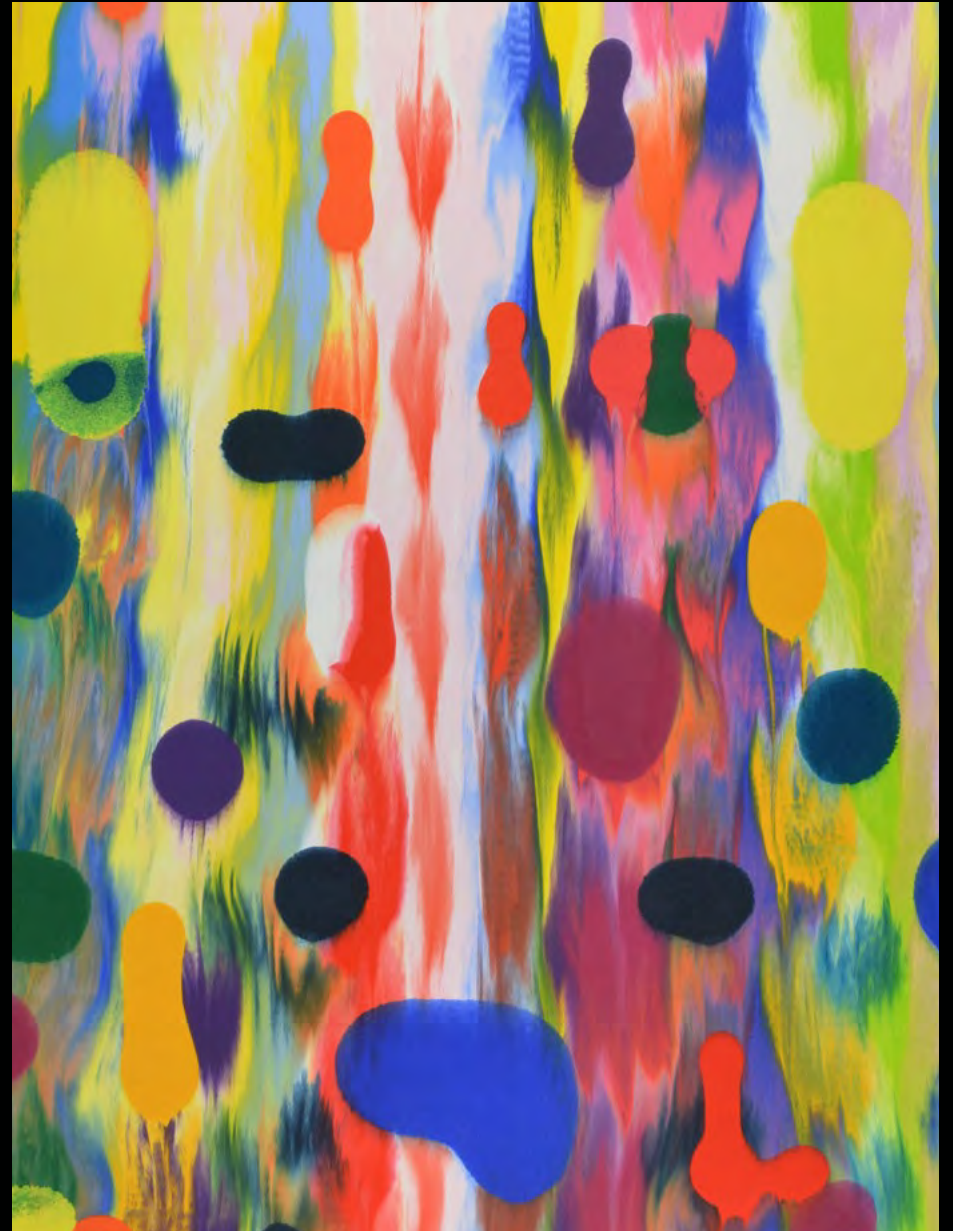
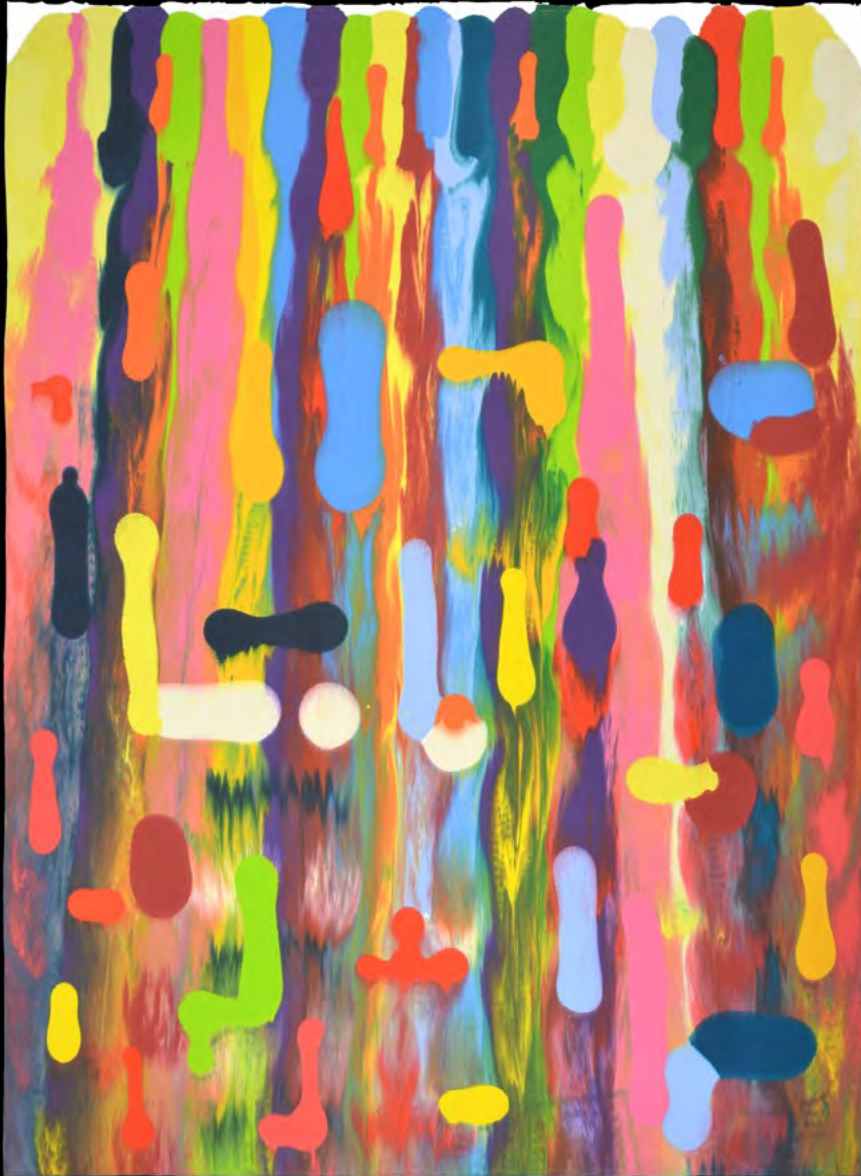
[Back to directory](#)



METHINKSYOURIGHTNOPROBLEM 3B
monotype
48 x 35.5 inches (image/sheet)
2004



METHINKSYOURIGHTNOPROBLEM 3D
monotype
48 x 35.5 inches (image/sheet)
2004



METHINKSYOURIGHTNOPROBLEM 4E
monotype
48 x 35.5 inches (image/sheet)
2004



On Press at Center Street Studio



Markus Linnenbrink and James Stroud pull a monotype off the press during the MUD-HONEY(NOV15) project.



James Stroud hangs a new monotype up to dry from the rafters of the shop. Because of the amount of ink used for each monotype, it takes approximately two weeks for the ink to completely dry.



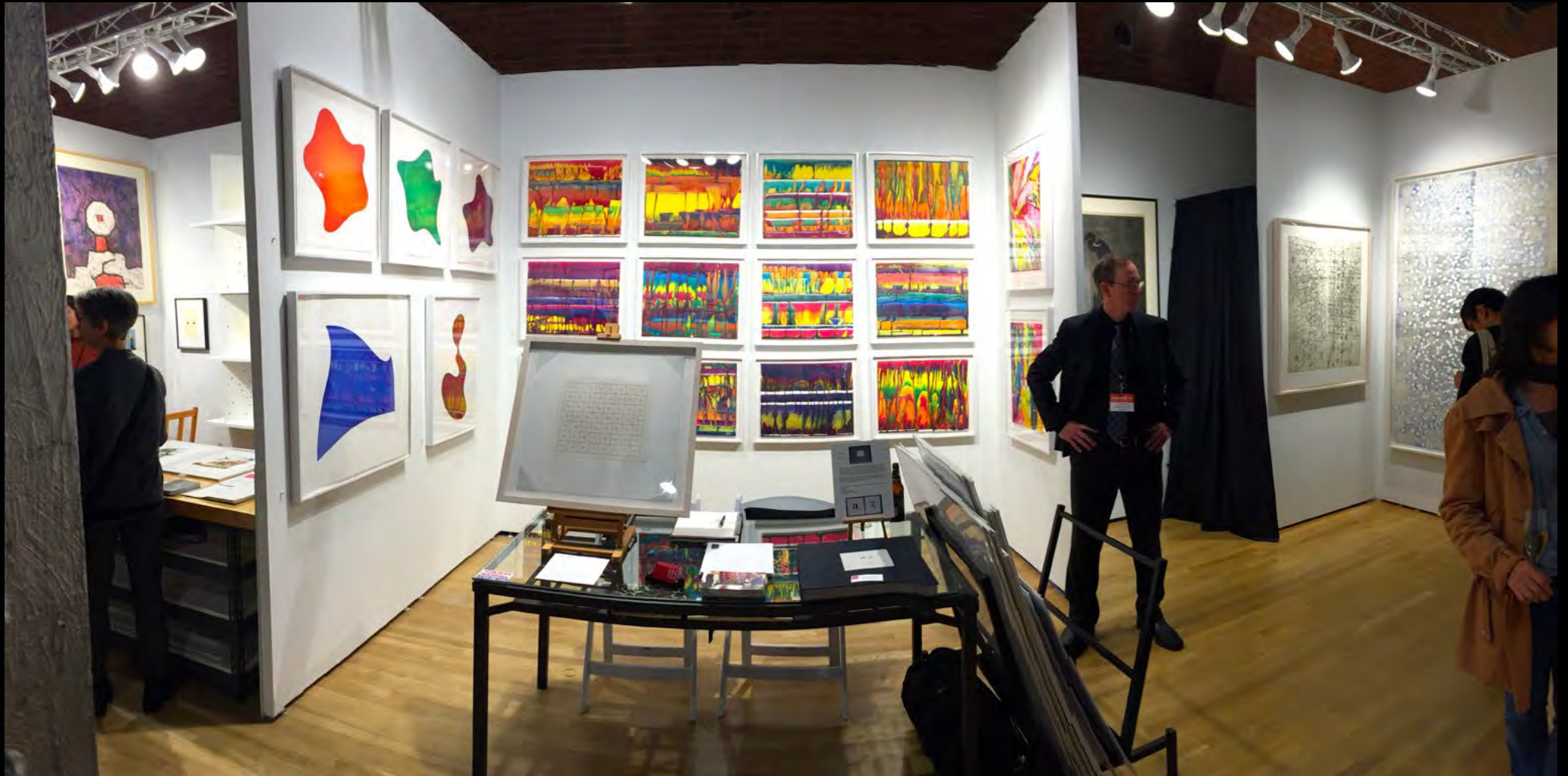
James Stroud and Markus Linnenbrink pose after a successful day printing Markus' 2015 monotypes IHEARDYOULOOKING(SCHRÄG).



Markus Linnenbrink and his monotypes hot-off-the-press



James Stroud with a full day's worth of new monotypes hanging from the rafters



An installation of Markus Linnenbrink's watercolor monotypes, *EVENTHOUGHYOUHAVETOGO*, on display at the 2015 E/AB Fair in New York City.

Price List

IHEARDYOULOOKING(SCHRÄG)

monotype

52 x 40 inches (image/sheet) \$ 5400

52 x 34.5 inches (image/sheet)

2015

MUDHONEY(NOV15)

monotype

52 x 40 inches (image/sheet) \$ 5400

52 x 34.5 inches (image/sheet)

2015

EVENTHOUGHYOUHAVETOGO

watercolor monotype

24 x 18 inches (image/sheet) \$ 3000

2015

IHEARDYOULOOKING

monotype

52 x 79 inches (image/sheet; diptych) \$10000

52 x 40 inches (image/sheet) \$ 5400

2013

VALLEYOFTHE DOLLS

monotype

48 x 35.5 inches (image/sheet) \$ 4500

2009

METHINKSYOURIGHTNOPROBLEM

monotype

48 x 35.5 (inches/sheet) \$ 4500

2004



©Markus Linnenbrink and Center Street Studio, 2015