

CENTER STREET STUDIO RECENT PROJECTS



CENTER STREET STUDIO

RECENT PROJECTS



works from George Whitman, Markus Linnenbrink, Raul Gonzalez, Mark Cooper, Jeff Perrott
Richard Ryan, Rachel Perry-Welty, Bill Thompson, Andy Freeberg, Laurel Sparks, and Roger Tibbetts



Center Street Studio

P.O. Box 870171
Milton Village, MA 02187
p| 617.821.5458

James Stroud, director/master printer
jstroud@centerstreetstudio.com

Design: Ryder Stroud

©CSS, 2014

Center Street Studio

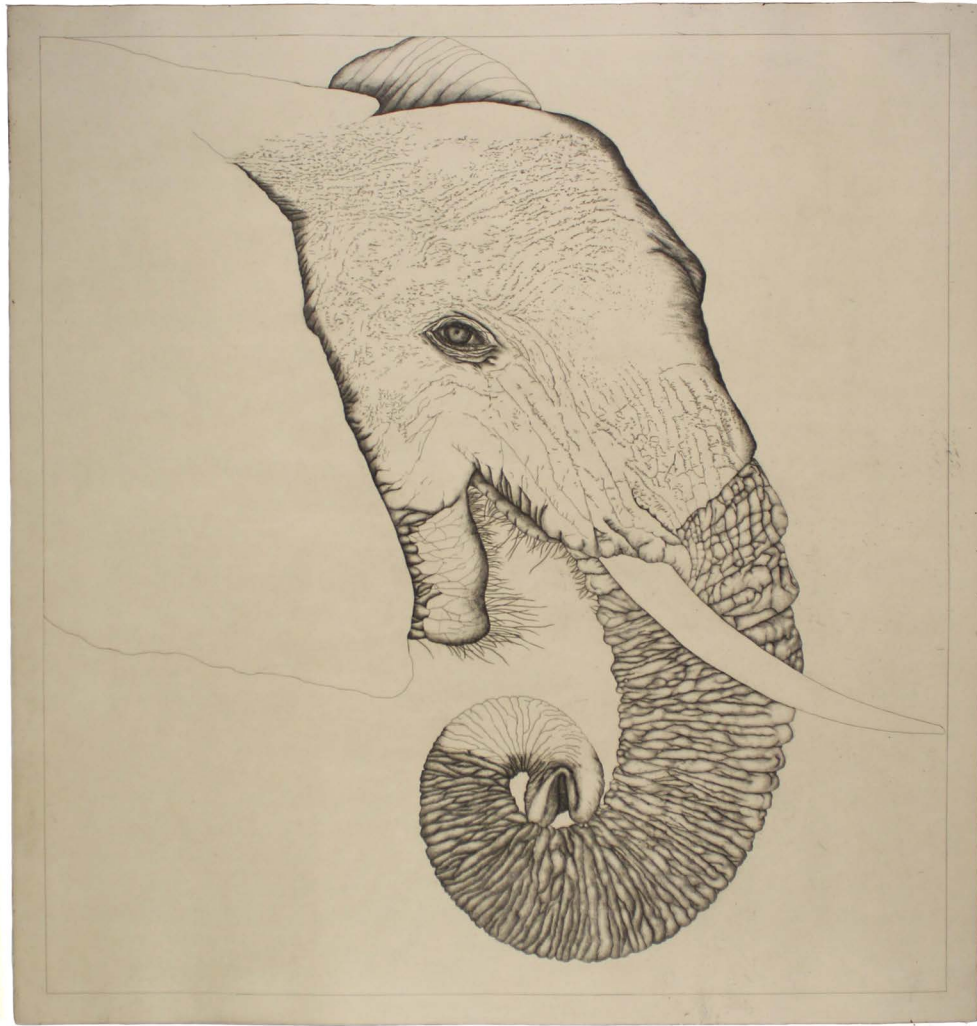
Artist and Master Printer James Stroud studied printmaking with legendary printmaker Stanley William Hayter at Atelier 17, Paris in 1980-81. He received his MFA in painting and printmaking from the Yale School of Art in 1984, after which he established Center Street Studio in its original location at 1 Center Street in Gloucester, MA. Now located in a post-and-beam barn in Milton, MA, Center Street Studio is in its 30th year publishing print projects with artists of national and international reputation. Stroud is particularly respected for actively seeking out emerging talent and pursuing projects with young artists. The Studio specializes in intaglio techniques and produces woodcut and monotype projects as well.



George Whitman, *Untitled (Landscape II)*, 2014
etching with chine collé
22 x 28 inches (image), 30 x 35 inches (sheet), edition 35



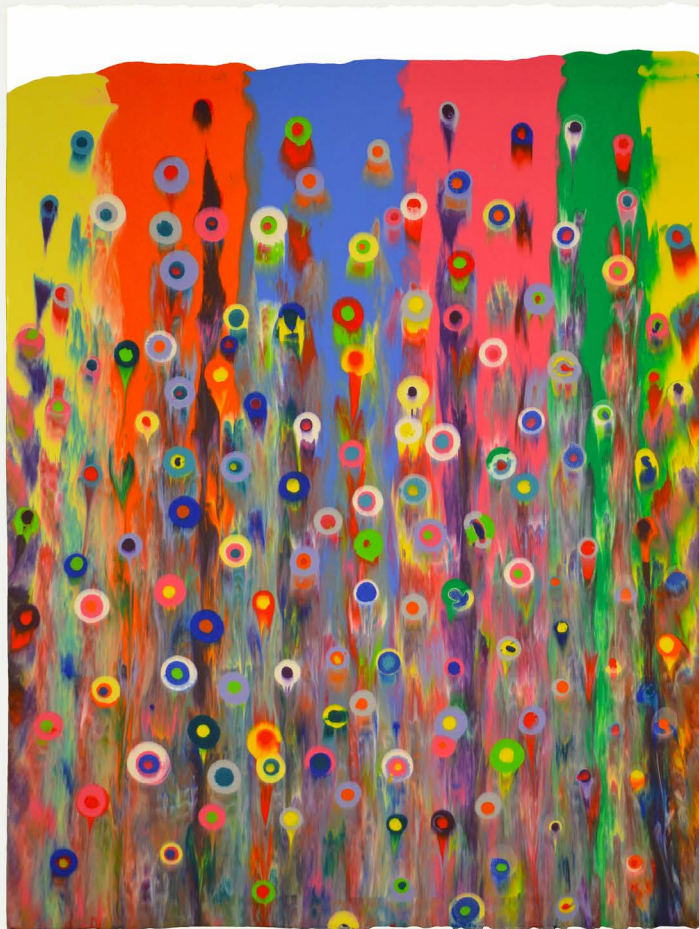
George Whitman, *Untitled (Landscape I)*, 2013
etching with chine collé
22 x 28 inches (image), 30 x 35 inches (sheet), edition 35



George Whitman, *Untitled (Elephant)*, 2010
etching with chine collé
40 x 36 inches (image), 46 x 42 inches (sheet), edition 30



George Whitman (left) signs his *Untitled (Elephant)* etching with Richard Waller (right), Executive Director of Museums, University of Richmond.



Markus Linnenbrink, *IHEARDYOULOOKING 20* (CSS20ABML13), 2013
monotype
52 x 79 inches (diptych)



Markus Linnenbrink, *IHEARDYOULOOKING 6* (CSS06ML13), 2013
monotype
52 x 39.5 inches (image/sheet)



James Stroud and Markus Linnenbrink pull a new *I HEARD YOU LOOKING* monotype from the press.



James Stroud and Raul Gonzalez signing the edition for Gonzalez's new etchings *Curios de las Americas* and *Curious about America*.



Raul Gonzalez, *Curios de las Americas*, 2013
etching and aquatint with chine collé stained with coffee,
24 x 18 inches (image), 30 x 22.5 inches (sheet), edition 25



Raul Gonzalez, *Curious about America*, 2013
etching and aquatint with chine collé stained with coffee,
24 x 18 inches (image), 30 x 22.5 inches (sheet), edition 25



Mark Cooper, *Lulu Blue 12*, 2013
watercolor monotype
30 x 48 inches (diptych)



Mark Cooper, *Lulu Blue 9*, 2013
watercolor monotype
30 x 24 inches (image/sheet)



Jeff Perrott, *Dervish XXXI*, 2012
watercolor monotype
24 x 19 inches (image/sheet)



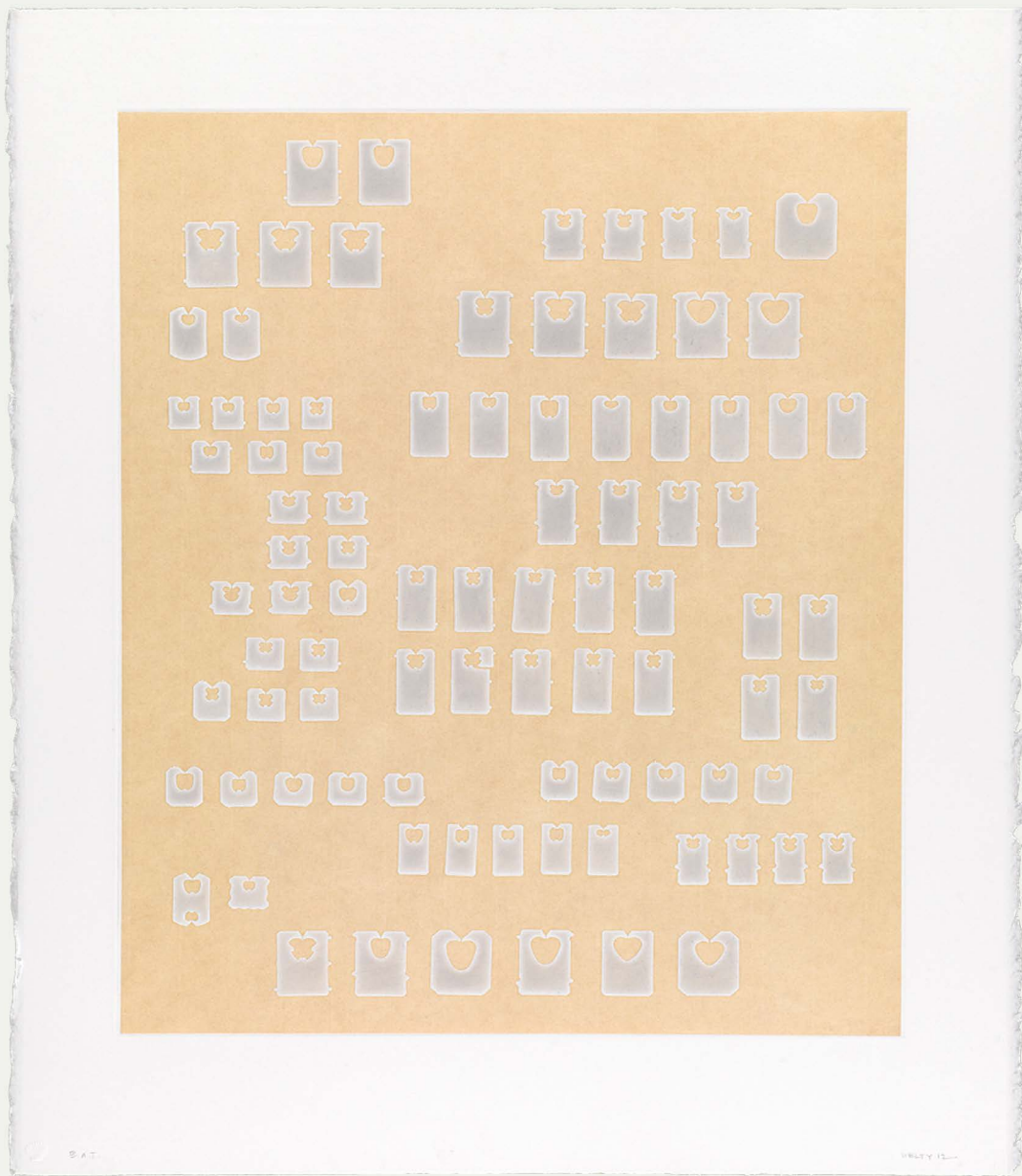
Jeff Perrott, *Untitled Assemblage X*, 2013
watercolor monotype
24 x 34 inches (image/sheet)



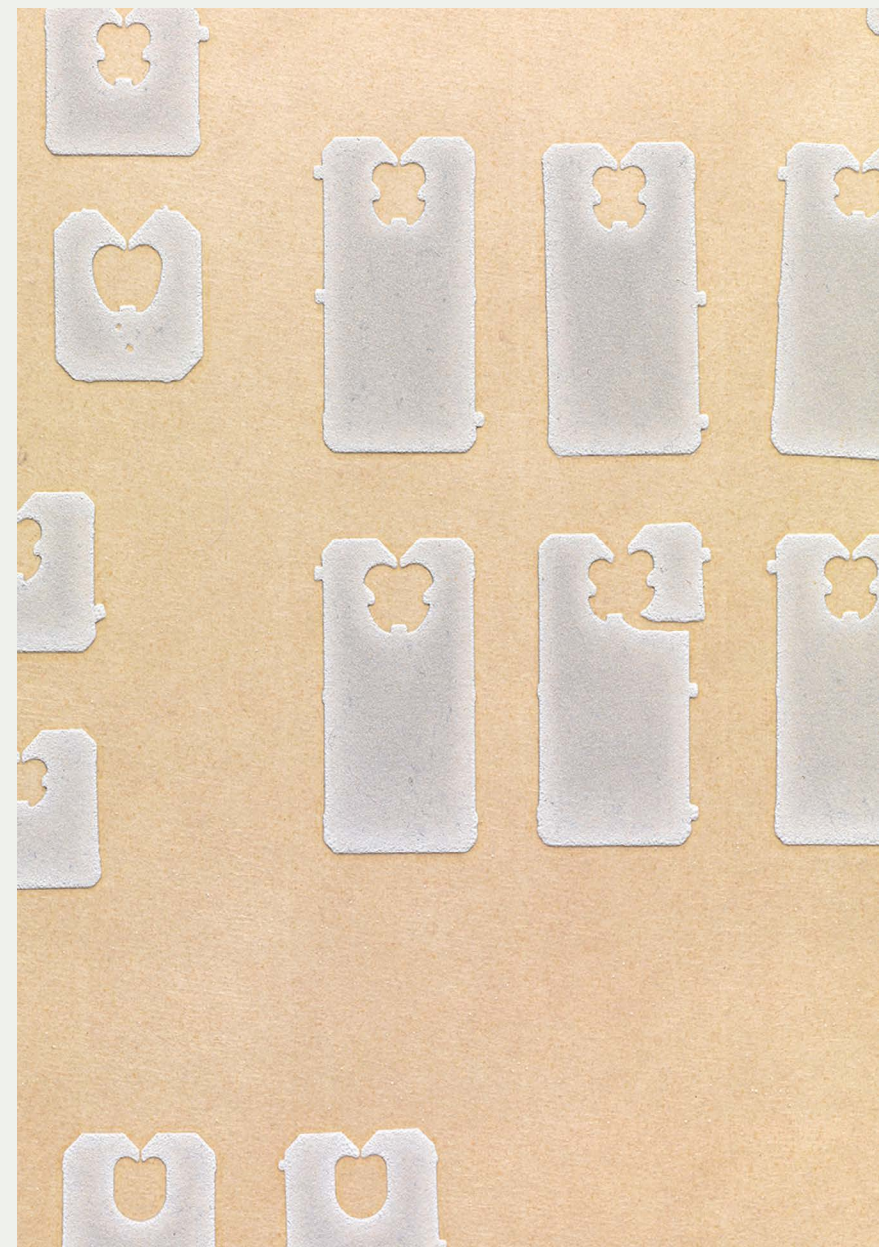
Richard Ryan, *Nine Black Poppies*, 2008
woodcut
54 x 40 (image), 60 x 43 inches (sheet), edition 25



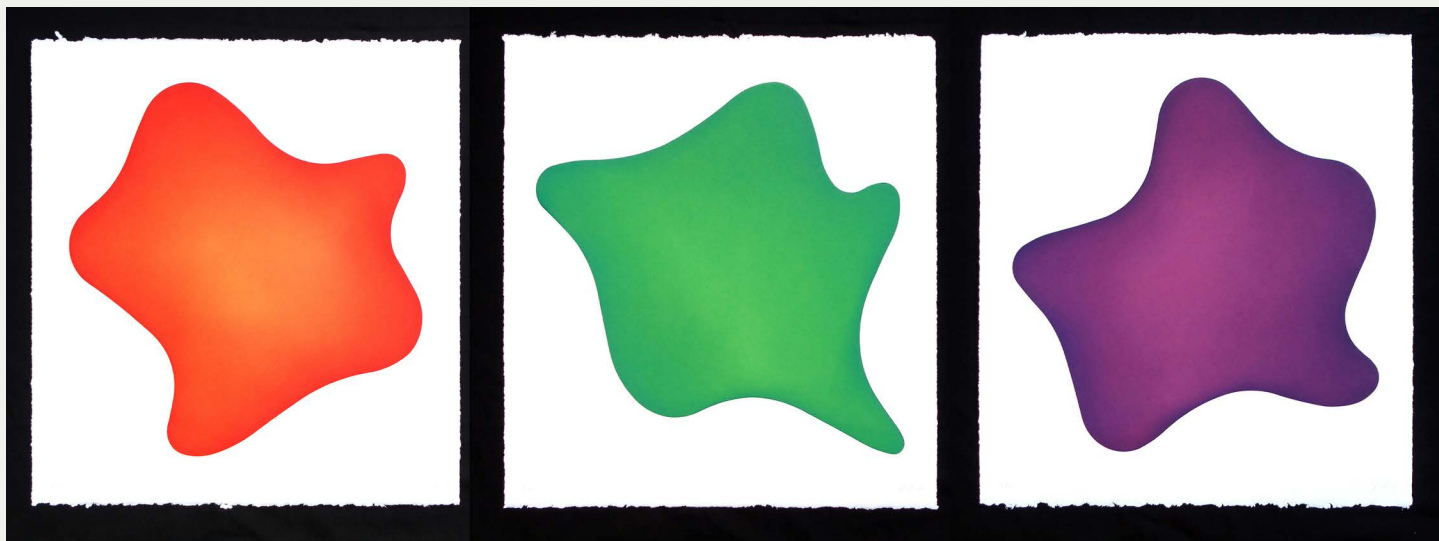
Richard Ryan, *Bird I*, 2009
woodcut
53 x 40 (image), 60 x 43 inches (sheet), edition 25



Rachel Perry-Welty, *None of these things is quite like the other*, 2012
photoetching with aquatint and chine collé
24 x 18 inches (image), 30 x 23 inches (sheet), edition 30



None of these things is quite like the other (detail)



Bill Thompson, *GYRO*, 2009
suite of three color aquatints with surface roll
23 x 22.5 inches (single sheet), 69 x 22.5 inches (triptych), edition 25



Bill Thompson, *Jig*, 2012
color aquatint with surface roll printed from shaped copper plate
25 x 19 inches (approx. image), 30 x 22.5 inches (sheet), edition 35



Andy Freeberg, *Antonius Pius, Youth, and Caryatid* - Hermitage Museum, 2010
photogravure
16 x 22 inches (image), 22.5 x 31 inches (sheet), edition 45



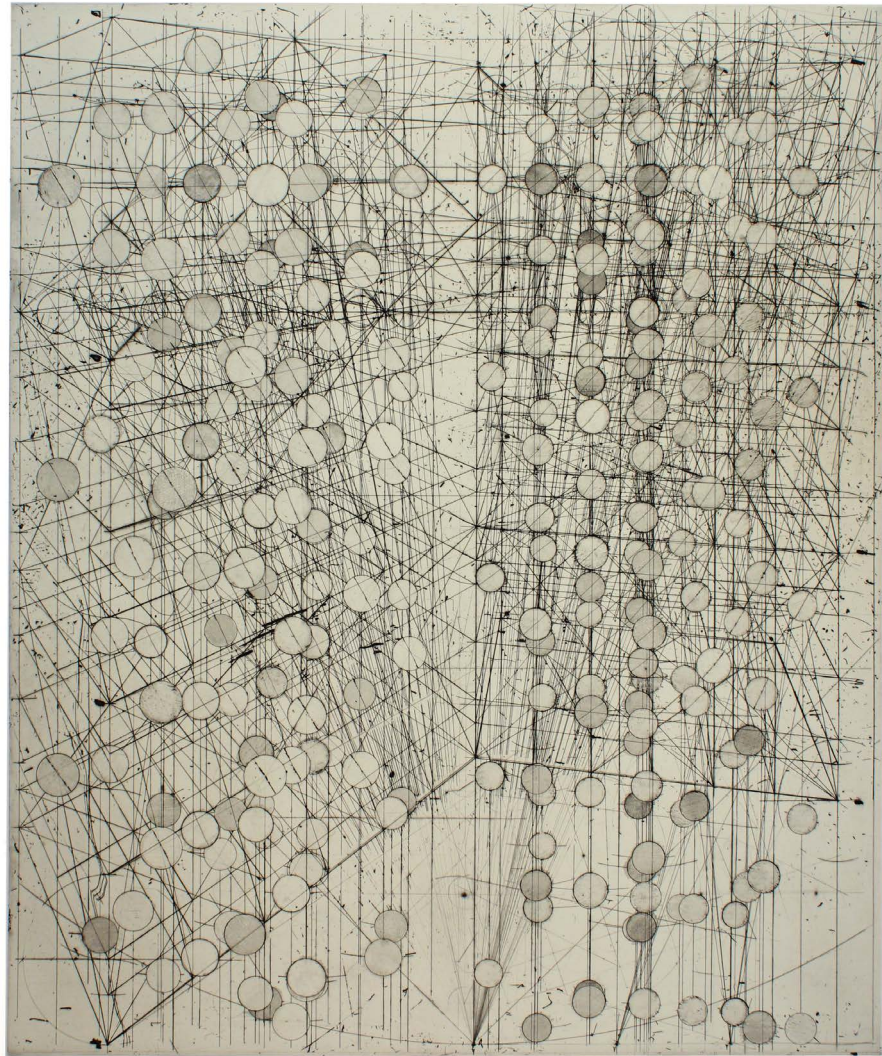
Andy Freeberg, *Dying Slave and Moses* - Pushkin Museum, 2010
photogravure
16 x 24 inches (image), 22.5 x 31 inches (sheet), edition 45



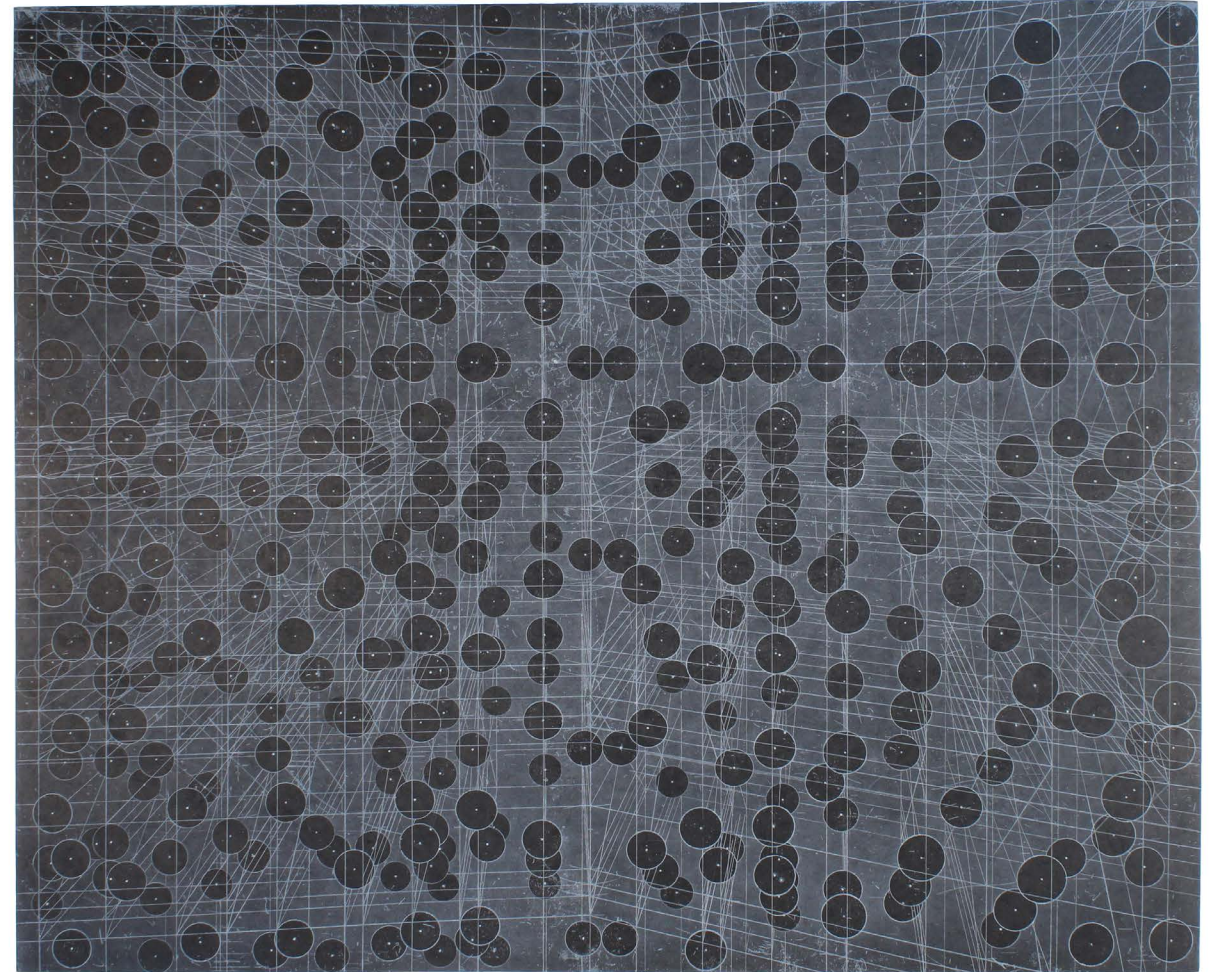
Laurel Sparks, *Luminous Procuress*, 2011
three-plate copper etching and aquatint with chine collé and hand additions
27 x 22 inches (image), 37 x 30 inches (sheet), edition 20



Laurel Sparks and James Stroud examining Sparks' print *Luminous Procuress*.



Roger Tibbets, *Symmetry*, 2003
etching with chine collé
29.75 x 35.5 inches (image), 34.75 x 43 inches (sheet), edition 30



Roger Tibbets, *CS II*, 2006
etching and aquatint printed in white ink on black Hanji chine collé
29.75 x 35.5 inches (image), 35 x 44.5 inches (sheet), edition 30



A gathering of Center Street Studio artists, summer 2013 (from left to right):
Janine Wong, Judy Kensley-McKie, Kelly Sherman, Jeff Perrott, Rachel Perry-Welty, Charles Ritchie, Gerry Bergstein, Todd McKie,
Bill Thompson, and James Stroud

For the most recent project announcements, updates, photos, and videos, visit:

- www.centerstreetstudio.com
- www.facebook.com/centerststudio
- www.twitter.com/centerststudio

